

## Supporting Information for applicants

### Embedding the Voluntary Community and Social Enterprise Sectors (VCSE) into the Integrated Care System (ICS)

- Integrated Care Systems are here to work together to plan and coordinate services so to make sure everyone gets the best care possible and can live happier, healthier lives.
- They enable us to take a broad view of what makes us happy and healthy

'We will enable people across Coventry and Warwickshire to start well, live well and age well, promote independence, and put people at the heart of everything we do'



Improve outcomes in population health and health care



Tackle inequalities in outcomes, experience and access to services



Enhance productivity and value for money



Help the NHS support broader social and economic development

#### The health and care system will contribute to delivering this by...



1. Prioritising prevention and improving future health outcomes through tackling health inequalities



2. Improving access to health and care services and increasing trust and confidence



3. Tackling immediate system pressures and improving resilience

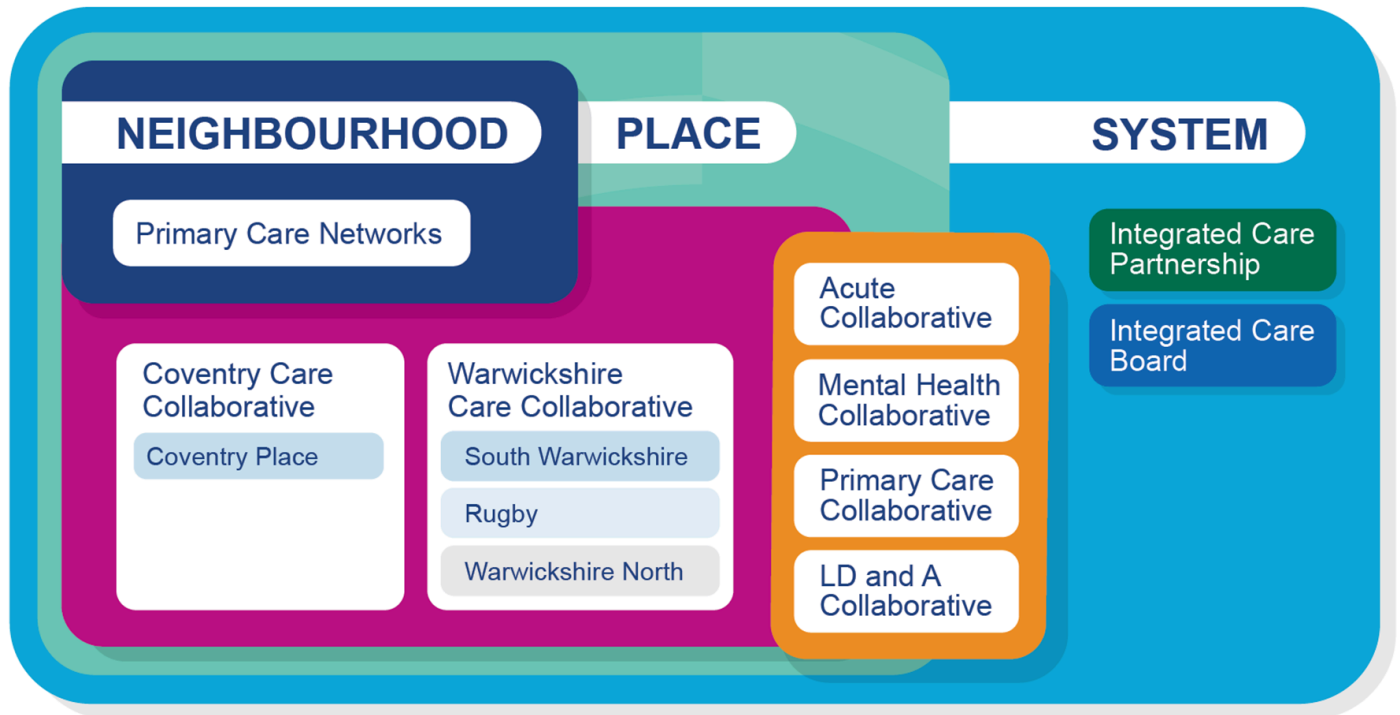
Enabled by...



4. Creating the conditions for change to happen



5. Transforming our system



## The VCSE Collaborative

- A 'one stop shop' for the sector across both geographical areas
- Provides information on all things ICS
- Reference Group/sub groups to hold partnership conversations
- Signposting to governance, infrastructure and wider support for the sector
- A place for commissioners to advertise/signpost opportunities including co-design/creation, production and engagement
- Process for representation
- Accessible, equitable and inclusive
- Place to showcase the great work of the sector in relation to reducing health inequalities
- Potential for 'Sub Alliances' complimenting the Community Strategy and Populations cohorts

## Useful Links

<https://www.happyhealthylives.uk/integrated-care-partnership/icp-strategy/>

<https://navca.org.uk/embedding-vcse-in-ics-1-1>

# ICS VCSE Reference Group

