

— 01 — OPENING · PURPOSE & POSITIONING

Welcome to the *circle*.

A global, volunteer-driven platform where people come together to collaborate on real-world social challenges. In this video, we'll walk you through what it's like to volunteer with us — our environment, our expectations, and whether this is the right fit for you.

— OUR WORK

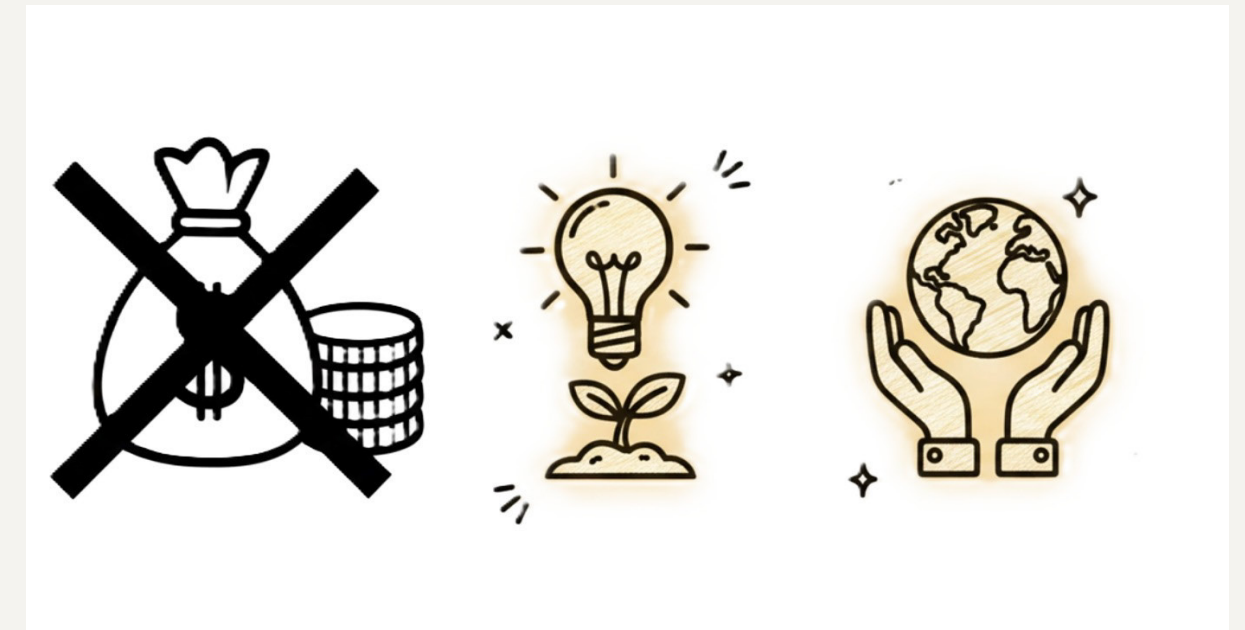
Powered by people who *choose* to contribute.

01	Education Schools, libraries, learning access.	02 Healthcare Treatment, services, well-being.
03	Environment Sustainability, climate, conservation.	04 Social Impact Civil rights, poverty, broader change.



— WHYPEOPLESTAY

Not for compensation — for *impact*.



This environment resonates most with individuals motivated by purpose, personal growth, and the chance to contribute to something meaningful alongside a global team.

DRIVER 01

Impact

DRIVER 02

Learning

DRIVER 03

Collaboration

DRIVER 04 Building something that matters

WHERE WE WORK

Fully remote. Globally distributed.

An international team of volunteers working across different time zones. Collaboration happens both asynchronously and through structured coordination — so people from around the world can contribute in ways that work for them.

MODE

Async-first

REACH

Global

SETUP

Your way

OUR CORE VALUE

Core Values

Compassion
We treat everyone with empathy, generosity, and respect, fostering an environment where every action contributes to making a positive impact.

Empowerment
We provide individuals and organizations with the tools, resources, and support needed to achieve meaningful, lasting impact - all while enjoying the journey through moments of connection, laughter, and celebration.

Integrity
We operate with the highest ethical standards, ensuring honesty, transparency, and trust in all that we do.

Reliability
We are committed to delivering results with consistency, efficiency, and proactivity, taking ownership to meet our commitments on time and with excellence.

Learning
We embrace forward-thinking creativity and the wisdom of past experiences, driving innovation and making informed, thoughtful decisions that shape a better future.

Collaboration
We are stronger together. By building inclusive partnerships and working hand-in-hand, we unite to overcome challenges and create lasting change.

Solution

— WHAT WE ASK OF YOU

A steady rhythm, not a sprint.



PER WEEK **~10** hrs

Flexible enough to fit alongside a

MINIMUM STAY

3 mo

Continuity matters in a volunteer-driven team — short stints don't compound.

WHAT CARRIES THE TEAM

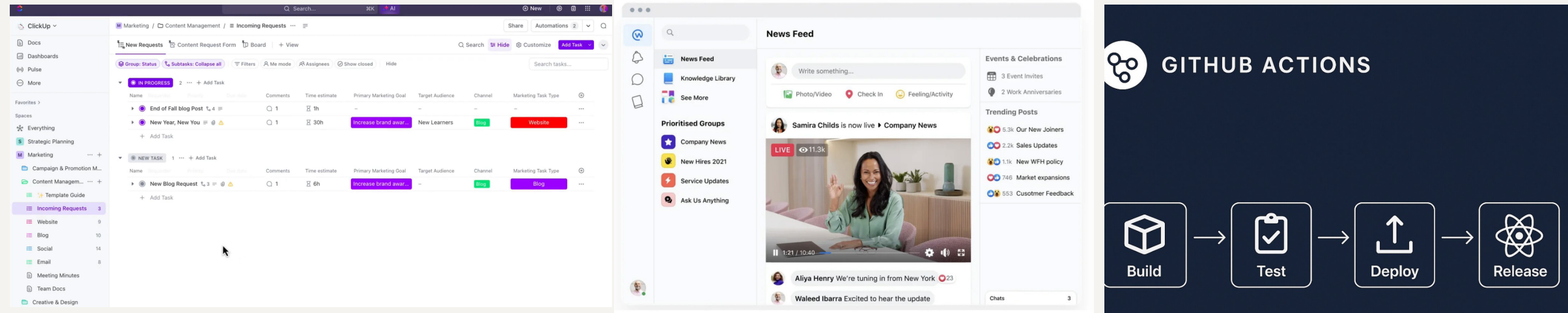
Consistency

Steady contributions move projects forward more than bursts of effort.

job, studies, or other commitments.

TOOLS & STRUCTURE

Four tools. One *shared* way of working.



01

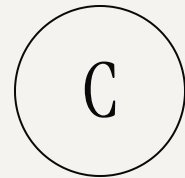


Slack

COMMUNICATION

Channels keep conversations transparent and findable across teams and time zones.

02

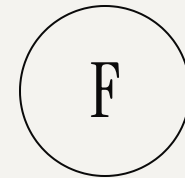


ClickUp

PROJECTS & TASKS

A single source of truth for what's in flight, who owns it, and what's next.

03

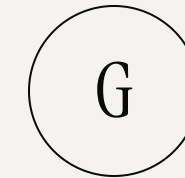


Figma

DESIGN

Where we explore, review, and ship product and brand work together.

04



GitHub

ENGINEERING

Code, reviews, and releases — open and traceable across contributors.

SIX THINGS WE LOOK FOR

People who can be counted on.



We value individuals comfortable working with autonomy, who take initiative, and who stay committed to delivering meaningful, consistent contributions.

01

Reliability

Doing what you said you'd do, when you said you'd do it.

02

Clear communication

Proactive, written, and easy to follow — in async-first channels.

03

Ownership

Treating the work as yours from start to finish, not just hand-off.

04

Accountability

Owning outcomes — including when things don't go to plan.

05

Honesty

Real status, real blockers, real trade-offs. No surface-level updates.

06

Initiative

Comfort moving forward without being told the next step.

— HOW WE MEASURE

GOOD WORK

*Not fast.
Thoughtful.
And steady.*

This isn't about working as fast as possible. It's about delivering thoughtful, high-quality contributions over time — taking responsibility for your work, and being able to operate independently when needed.

INSTEAD OF *Speed at all costs*

WE INVEST IN

Quality that compounds.

OPERATING MODE

Independent, by default.

— A GREAT FIT IS

Built for *this*.

- + Enjoy working in a remote, international team.
 - + Can manage time independently.
 - + Motivated by contributing for impact.
 - + Are driven by purpose and meaningful work.
 - + Want to take ownership through real responsibility.
-
-
-
-

— MAYBE NOT FOR YOU

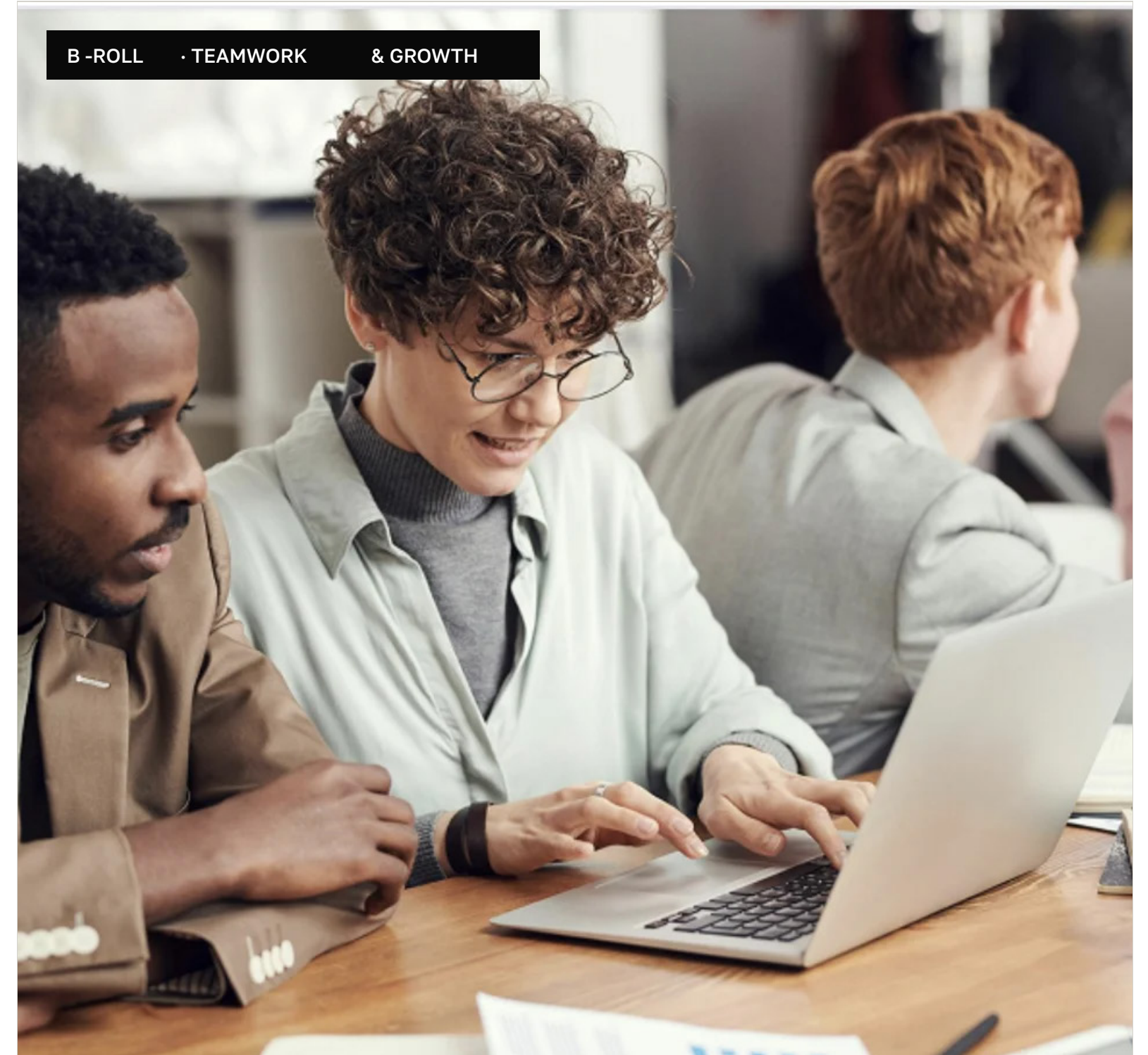
IF YOU

- Want a short-term or casual commitment.
 - Need a highly guided, step-by-step environment.
 - Prefer minimal responsibility or low engagement.
 - Are driven primarily by external incentives.
 - Need compensation as the primary motivator.
-
-

— WHAT YOU WALK AWAY WITH

Real work, *real impact.*

<p>01 Experience</p> <p>Working in a collaborative, global environment.</p>	<p>02 Skills</p> <p>Practical, transferable, and project-shaped.</p>
<p>03 Network</p> <p>A diverse group of volunteers across disciplines.</p>	<p>04 Meaning</p> <p>Contributions to initiatives that move things forward.</p>



— FROM HERE

How the *journey* begins.

Step 01

Apply

A short application — tell us who you are, what you'd like to work on, and how much time you can give.

[Solution Career Page](#)

Step 02

Connect

A conversation with the team, to make sure the fit feels right on both sides.

Step 03

Onboard

Slack, ClickUp, Figma, GitHub — your access, your team, your first projects.

Step 04

Contribute

Steady contributions, grown over months — you become part of how Solution moves.

Building a Platform for Real Impact



Welcome to
the *circle*.

If this aligns with what you're looking for, we invite you to join and take the next step with us. We look forward to connecting with individuals who are committed, reliable and aligned with our way of working

[COMPLETE APPLICATION TO JOIN](#) 

<https://www.communitysolution.org> [CAREERS](#)