

Breakthrough T1D Recruitment Pack



We are the leading global type 1 diabetes (T1D) research and advocacy charity; we help make everyday life with T1D better while driving toward cures.

Today, we are opening doors closed by a diagnosis of T1D. We do this by connecting the brightest minds and investing in the most promising research, campaigning for access to treatments and technology and supporting the T1D community. Tomorrow, we will make this condition a thing of the past.

"Breakthrough T1D provides a brilliant mix of passion, flexibility and a can-do culture that adds to an unwavering commitment to helping people with type 1 diabetes, which I couldn't get anywhere else! It's a brilliant place to work!"

Chris Bright, Community Partnerships and Events Lead

Thank you for considering Breakthrough T1D



**Karen Addington,
MBE**
Chief Executive
Officer,
Breakthrough T1D
UK

We're delighted you're interested in joining us at such an exciting time in our mission. We're driving life-changing breakthroughs to improve lives today and bring us closer to a future without T1D. Thanks to the support of our community and dedicated colleagues like you, the pace of change is accelerating faster than ever.

As part of a global organisation, you'll be connected to an incredible network of researchers, advocates, and supporters who are breaking down barriers and opening up new possibilities for everyone affected by T1D.

Here in the UK, you'll be part of a passionate and collaborative team, united by a shared purpose. Your work, whether you're raising vital funds or supporting the T1D community in other ways, will directly help people live better, healthier lives while moving us closer to a world without T1D.

Thank you for wanting to be part of our team, your contribution will make a real difference.

Our values:



Stand as one:

Moving forward together by embracing different perspectives, backgrounds, and expertise.



Act with purpose:

Staying true to the needs of our community and our organisation.



Lead with kindness:

Always meeting people with empathy and support.

Senior Fundraiser

Job description

DEPARTMENT

This role sits within the Fundraising and Engagement Department. Breakthrough T1D receives very little government funding so nearly all of our income is generated by the activities of the Fundraising & Engagement Department. The department is a high performing team working across the UK to deliver on challenging fundraising targets. We are an enthusiastic and committed team, collaborating across the organisation to generate income to find a cure and support the type 1 community.

PURPOSE OF THE ROLE

Together with the Head of Scotland – Fundraising, drive forward Breakthrough T1D’s High Value fundraising strategy in Scotland and the North of England. The focus will be growing income from Major Donors and Corporate Partnerships.

Recruit and steward supporters in Scotland, creating meaningful connections with our supporter based that result in long term support.

KEY RESPONSIBILITIES

- Cultivate major donor prospects in Scotland and the North of England and provide ongoing stewardship/account management to grow value, including developing proposals and reporting, working with internal teams.
- Cultivate new corporate partnerships and networks and provide ongoing stewardship and account management to grow value
- Support on the delivery of cultivation events such as intimate research briefings and lab tours as part of ongoing stewardship and new donor development.

JOB TITLE:

Senior Fundraiser

STATUS:

Permanent

HOURS:

35 hours per week (Breakthrough T1D operates a flexible working hours policy)

SALARY:

£34,600 per annum

HOLIDAY:

25 days plus statutory holidays (increasing with years of service)

LOCATION:

Home-based Scotland. The role will involve travel across Scotland and the North of England

REPORTS TO:

Head of Scotland (Fundraising)

DIRECT REPORTS:

N/A

KEY INTERNAL RELATIONSHIPS:

High Value Partnerships team, wider Fundraising team, Finance, Research and Marketing teams

KEY EXTERNAL RELATIONSHIPS:

Breakthrough T1D high value supporters, senior level corporate contacts and suppliers

Senior Fundraiser Job Description

KEY RESPONSIBILITIES - continued

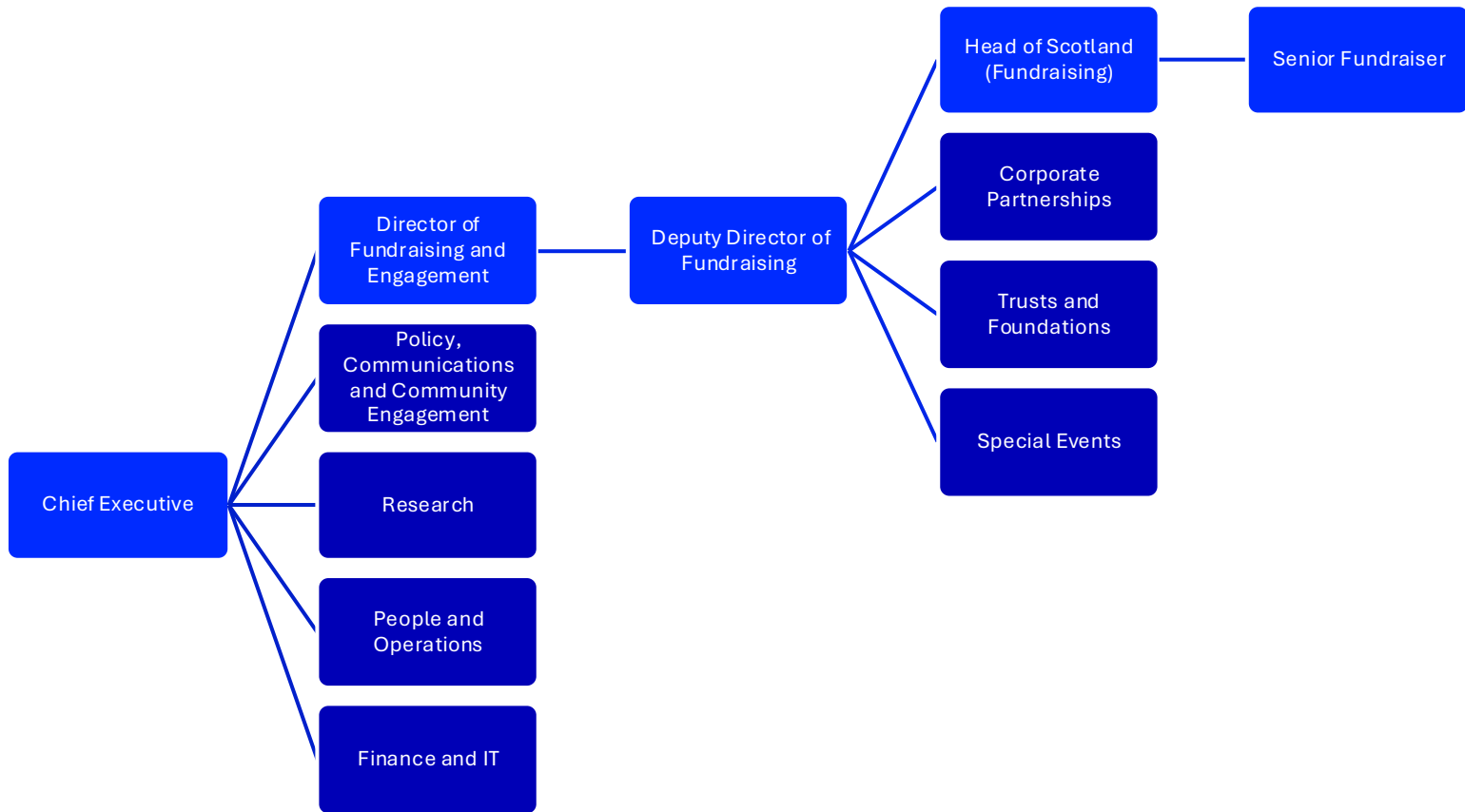
- Support the delivery of special events in Scotland and the North, including the Gala Ball.
- Support the Head of Scotland with financial planning and forecasting
- Support fundraising admin, including income processing as required, working with Finance and other Fundraising teams.
- Support volunteers as required, in pursuit of Breakthrough T1D's fundraising objectives.
- Undertake other duties as required

EQUAL OPPORTUNITIES

Breakthrough T1D is an equal opportunity employer and does not discriminate against employees for job applications on the basis of race, sexual orientation, religion, colour, sex, age, national origin, disability or any other status or condition protected by applicable law. This policy extends to but is not limited to recruitment, selection, remuneration, benefits, promotion, training, transfer and termination.

Breakthrough T1D is the operating name of Juvenile Diabetes Research Foundation Limited, a registered charity No. 295716 (England and Wales) and SC040123 (Scotland).

Senior Fundraiser Department Organogram



Senior Fundraiser Person Specification

Person Specification	
Criteria	Essential
Experience:	<ul style="list-style-type: none"> • Experience of working to budgets and plans • Experience of capturing and using supporter data to make decisions • Experience of working with major donors, corporate partners or strong evidence of growing income with senior stakeholders
Skills:	<ul style="list-style-type: none"> • Ability to work independently under own initiative and as part of a team • Ability to build strong and deep relationships with supporters • Emotional intelligence • Ability to prepare reports and proposals for external audiences • Project management • Excellent attention to detail • Excellent organisation skills • Able to collaborate across internal teams
Style of working:	<ul style="list-style-type: none"> • Empathetic • Charismatic • Supporter-focused • Outgoing, confident, friendly, positive, professional and a team player • Resilient
Other:	<ul style="list-style-type: none"> • Flexibility and willingness to work some unsociable hours

Employee Benefits



As an employer we offer:



Hybrid working arrangements



Pension scheme



Season ticket and cycle loan



Generous annual leave entitlement – 25 days per year plus bank holidays for full-time staff with leave increasing after three and five years' service



Health cash plan that allows you to claim for some treatments such as dental, optical and physiotherapy treatment



Flexible working and will consider compressed hours



Family-friendly policies – maternity, paternity, adoption and shared parental leave at enhanced rates



Personalised training to suit your career aspirations and professional development