



BATTERSEA

HERE FOR EVERY DOG AND CAT

RECRUITMENT PACK



Senior Cloud Administrator (BDCH6122) - Battersea London

Battersea is here for every dog and cat and has been since 1860. We are a leading animal welfare charity and over the last 160 years we've grown from one home in London to three rescuing and rehoming centres across the South East. With c600 staff and 1000 volunteers, we have cared for over three million vulnerable animals. We also campaign tirelessly to make things better for dogs and cats, sharing our expertise and educating the public and policymakers about responsible pet ownership. Join us and make a difference for every dog and cat.

Please read the information below thoroughly before starting your application.

Your Application

Your supporting statement is a very important part of your application. We cannot make any assumptions about your knowledge, skills and experience so the information that you provide in your supporting statement is vital for us to decide whether to shortlist you for an interview.

Please demonstrate how you meet the criteria and our values listed in the person specification, detailing your experience, skills, achievements and/or abilities that are relevant for the role that you are applying for. You should use specific examples. Please do not generalise e.g. "I usually...", or waste your word limit by telling us that you love dogs and cats. We are looking for evidence that you can thrive in the role advertised.

Your statement should not exceed 1,000 words. We recommend you draft and save your supporting statement outside of the application portal as your connection may time out and it is not possible to save this document online for future use.

Closing date: 2nd June 2024

Interview date: TBC

If you do not hear from us within 2 weeks of the closing date, please assume you were unsuccessful on this occasion. Please note that we reserve the right to close this post early, should we receive a high volume of applications.

We are committed to providing equality of opportunity and valuing diversity for all current and prospective staff, volunteers and Trustees. We aim to ensure that this commitment, reinforced by our values, is embedded in our day-to-day working practices and our work together. We would particularly welcome applications from black and minority ethnic and disabled candidates, who are currently under-represented at Battersea.

Working at Battersea

Please note that all offers of employment require:

- References deemed satisfactory by Battersea
- Proof of eligibility to work in the UK

Data Protection

The information you provide in your application will be used by Battersea Dogs and Cats Home (Battersea) to assess your suitability for the role you have applied for. We will not use your personal data for marketing or fundraising purposes (unless you have previously supported Battersea) and will not share your data with any third parties for their marketing purposes. We will also ask you for sensitive information (such as information relating to ethnicity or sexual orientation), but only to allow Battersea to monitor and report on diversity and equality of opportunities. The provision of this information is entirely voluntary and will not be used in determining whether you are shortlisted for the role you have applied for.

Further information about how we protect and use your personal data is set out in our Job Applicant Privacy Notice or contact our Data Protection office at DataProtection@battersea.org.uk

Job Description: Senior Cloud Administrator

Department: Infrastructure Services	Location: London (with regular visits to our centres in Old Windsor and Brands Hatch)
Hours: 35 hours per week We're always happy to discuss flexible working, part time hours and job share arrangements	Duration: Permanent
Responsible To: IT Systems Manager	Responsible For: N/A
Works With/Key Contact: External IT Support Companies/Contracts, Telephony, Database, etc.	Salary & Grade: £41,000 per annum Grade C2

Battersea's approach to diversity

Battersea is here for every dog and cat and has been since 1860. We care for animals unconditionally, and we do not judge the owners of pets that need our help. It is this commitment which brings us together as an organisation, and we take great joy and pride in that.

We were founded by a female pioneer, Mary Tealby, who was unafraid to confront convention at a time when women leaders were rare, and animals were not universally loved. Her willingness to challenge the status quo is part of the legacy she leaves with us today, and we celebrate the impact we have made so far because of her vision.

We are ambitious to do more, including helping new populations of animals in new places beyond our centres; and we know we must adapt to the evolving world around us, harnessing the skills, experience, and creative thinking of a diverse workforce to help greater numbers of animals and deliver the impact we all aspire to. And we know that an inclusive environment, where we welcome different perspectives and where staff and volunteers are empowered to be themselves, will ensure we continue to thrive.

We strive to create lasting change for animals and the people that care for them and believe that creating a truly diverse and inclusive Battersea, which is proudly open to all, will be essential in our mission to deliver greater impact for dogs and cats everywhere.

Main Purpose of the Role

To provide 3rd level project support and 3rd line helpdesk support, acting as an escalation point for the Support Team. Supporting and maintaining all our infrastructure, both on premise, and in Azure

Overall Objectives

- Provide a responsive IT service ensuring all IT queries and requests escalated from support are followed through to completion
- Provide appropriate IT support across all 3 Battersea sites on a regular basis
- To lead and support IT projects

The department provides support from 9:00am to 5:00pm, 7 days a week and as such the post holder will need to operate flexible working hours, including working outside of these hours when required to meet the objectives of the post and to provide out-of-hours cover.

Responsibilities

Approx. % of time

Support, develop and maintain physical, virtual, and cloud server and network topology and ensure network capability is in place to support the business requirements	10%
Maintain and ensure that internal physical and virtual server and network infrastructure is maintained for 7 day a week operation. Provide 3 rd line helpdesk support, supporting and maintaining the existing server and desktop infrastructure	10%
Assist and advise on the deployment of new software and upgrades to ensure minimum disruption.	10%
Lead and support IT projects working both with departments within Battersea & with 3 rd parties to achieve desired outcomes on time and within budget.	10%
Create system and implementation documents and ensure all systems information and documentation is up to date and readily available.	10%
Accept and deal with user problems/enquiries escalated from the IT helpdesk, further escalating any calls that cannot be resolved by the IT department to higher-level external support.	10%
Ensuring and maintaining our Cyber Security principles across all aspects of the role	5%
Maintain and update documentation on procedures (user guides etc.)	5%
Investigation and resolution of any reported or potential problems within the systems.	5%
Ensure that system backups are designed, completed and tested for data recovery and disaster recovery scenarios.	5%
Managing and driving full value from the 365 tenant and product suite	<5%
Advising and assisting in our move from on prem to cloud infrastructure and solutions, including working with 3 rd parties for integrations with other cloud platforms & services	<5%
Provide training and guidance to the staff on the use of Battersea's IT systems including presentations to other departments within Battersea.	<5%
Provide out of hours Support and Maintenance for IT Emergency situations on an ad hoc basis	<5%
Ensure server and network hardware and software is supplied and sourced appropriately for Battersea. Process purchase orders for procurement and liaise with Finance for reporting purposes	<5%
Ensuring all software and hardware is kept up to date with relevant security patches, software or firmware updates	<5%

The above job description is intended to be an outline of the duties and responsibilities for this role. This is not an exhaustive list, and it is likely to change over time. You may be expected to undertake other duties that are commensurate with this role and grade.

Decision Making and Accountabilities

Decision Making

- To contribute to overall project direction and during implementation to follow best practice and change control processes.

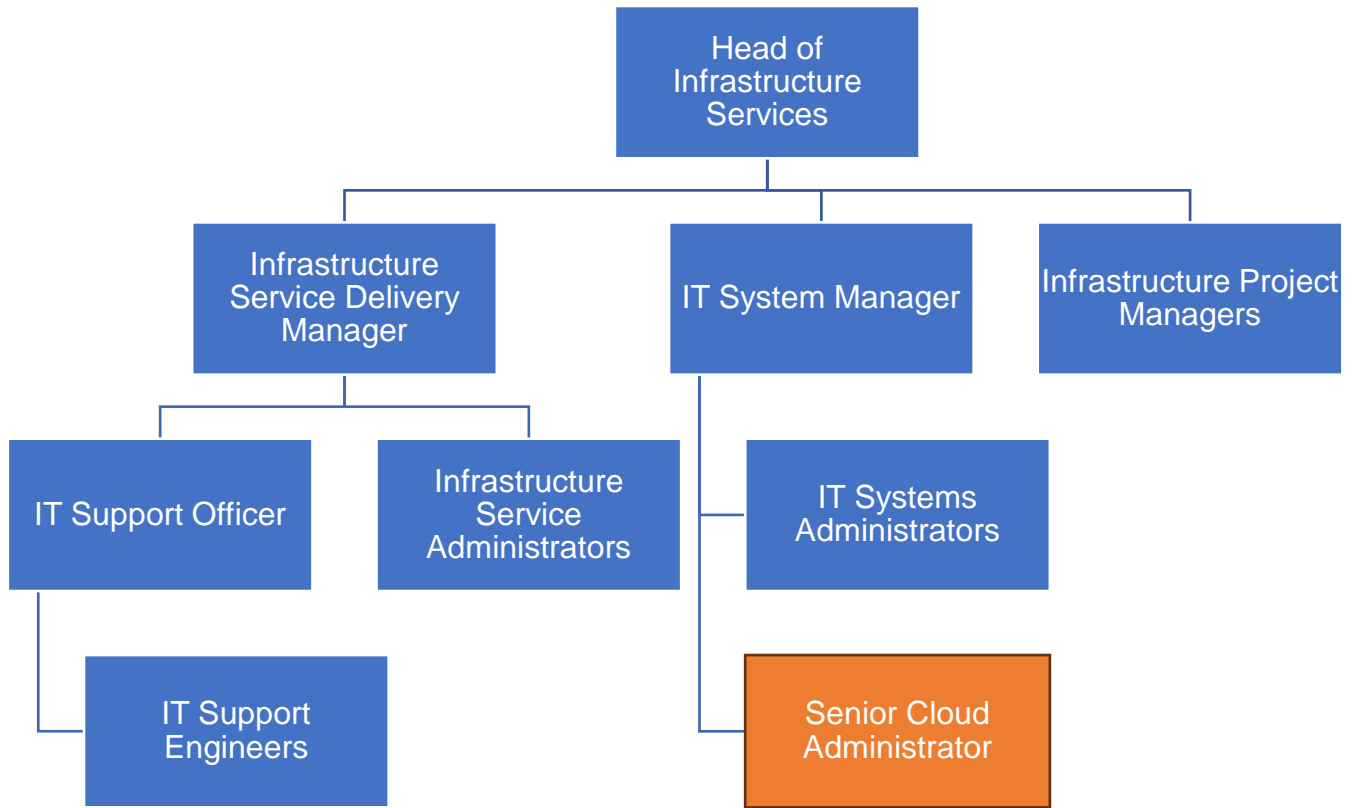
Accountability

- Meeting project milestones and targets set by the IT Systems Manager

Person Specification

Job Specific	<p>Detailed experience & knowledge of (we would expect you to have a minimum of experience out of 11 out of the 14 points):</p> <ul style="list-style-type: none"> • Entra ID (Azure AD) management • MS Azure Enterprise apps • Azure server virtualisation • Maintaining and improving the organisations CyberSecurity position • DNS zone management • Intune Endpoint management including configuration profiles, application and script deployment, and compliance policies • MS SharePoint site creation, management, and migration from file shares including data labelling • MS Teams management (Teams calling currently in use for telephony) • MS Forms and PowerAutomate for flows • Powershell • MS Project administration • PowerBI dashboard creation • Microsoft Defender security and threat management • Active Directory and AD Connect to 365
	<p>An understanding of working with some of the following (experience in all these areas is not essential):</p> <ul style="list-style-type: none"> • Azure virtualized networking • Certificate Management • Office 365 • File and server backup and recovery (currently Veeam/Synology) • Hyper-V – virtualised server infrastructure and clustering (2016/2019) • WAN technologies (MPLS Network) & RDS • Network and Hardware Monitoring tools • LAN technologies - currently Dell Switches (VLANs, Port configuration, ACLs, etc.) • DNS/DHCP/AD/GPOs • DFS file servers • Remote Desktop Services • Imaging and provisioning software (WSUS on prem / Azure Intune enrolment and management cloud) • Wireless Access Points and SSIDs • SQL server experience desirable
	<p>A significant track record of resolving issues through utilising both practical ability and strong analytical skills, both individually, and collaboratively.</p>
	<p>Experience of working with retail PCI Compliancy.</p>
	<p>Experience in a customer facing environment and providing good customer service.</p>
Values	<p>CARE - Delivers high quality work to the best of their ability and achieves high standards even while under pressure.</p> <p>EXPERTISE – Achieves results through continuous learning and applying good practice.</p> <p>DETERMINATION – Pro-active in suggesting new ways of working and embraces change.</p> <p>RESPECT – Works constructively and collaboratively with colleagues from different teams</p> <p>INCLUSION – Champions diversity in all its forms, so that everyone can be themselves and feel valued and included.</p> <p>COLLABORATION – Works as a team, recognising, trusting, and valuing everyone’s role and contribution in delivering our aims.</p>

Position within Team



Employee Benefits

We offer our employees a wide range of benefits to reward them for the value that they bring to Battersea, to support them in their work, to help improve their health and wellbeing, and maintain a healthy work-life balance.

We intend to offer these benefits on an ongoing basis but may amend or withdraw them at any time.

Battersea has been verified as a truly flexible workplace by Flexa for 2024-2025. You can find out more about our flexible working benefits via our [Flexa Page](#).

Pension Scheme

Our group personal pension scheme is available to all members of employees. New employees will be auto enrolled into our pension scheme in their second month of employment, if they meet the eligibility criteria, at our standard rate of 2.67% employee contribution, 5.33% employer contribution. The following month, new starters can choose to increase their contribution rates and so benefit from a higher employer contribution of up to 10%. Because the GPP pension scheme is a salary sacrifice scheme, Battersea will also invest approximately 50% of the savings it makes on Employer National Insurance Contributions into your pension plan.

The contribution levels are as follows:

Employee contribution	Battersea contribution
2.67%	5.33%
3%	6.2%
5%	10.3%

Example of monthly pension contributions for salary of £20,000:

Employee contribution	Battersea contribution	pension
2.67% = £44.50	5.33%	= £88.83
3% = £50.00	6.2%	= 103.33
5% = £83.33	10.3%	= £171.66

Annual Leave

Employees are entitled to 28 days annual leave (pro-rata for part time employees and in the first year of employment), rising to 29 days after 5 years and 30 days after 10 years employment. This is in addition to eight days paid public holidays every year.

Health Cash Plan

Battersea offers a healthcare cash plan free of charge to all employees, using a provider called Simply Health. This cash plan enables employees to claim 100% of the costs of everyday healthcare, such as dental treatment, eye tests, glasses, contact lenses, physiotherapy, chiropody, osteopath, chiropractor, health screening and much more, up to annual limits.

Gym Membership

Employees who choose to join the Cash Health Plan can get discounts of up to 20% off a range of independent and chain gyms, including Fitness First, LA Fitness, Virgin Active and David Lloyd.

Season Ticket Loan

Interest free season ticket loans are available to all employees after two months of employment with Battersea.

Cycle to Work Scheme

We offer a Cycle to Work Scheme to encourage health and fitness. This enables you to save up to 40% of the cost of the purchase of a bike and safety equipment, up to a maximum value of £2,500 including VAT, by

having this cost recovered from salary over a 12-month period and so saving tax and National Insurance on this cost.

Paid Maternity Leave

All pregnant employees are entitled to up to 52 weeks' maternity leave regardless of length of service. Employees who have worked with Battersea for more than 12 months by the time their baby is born receive enhanced maternity pay of 12 weeks full pay, with the remainder of their maternity leave being paid under Statutory Maternity Pay arrangements.

Paid Paternity Leave

Fathers to be or employees who will share the responsibility with a partner for bringing up a child, may have the right to Statutory Paternity Leave and Pay.

Employees who have worked for Battersea for more than 12 months by the time their baby is born receive enhanced paternity pay of two weeks full pay.

Employee Assistance Programme

We offer a Employee Assistance Programme to all employees free of charge. It offers completely confidential and impartial support, information, and counselling service to employees on legal, financial, debt management and emotional issues.

Life Insurance

All employees are covered by our life insurance scheme, which provides a nominated beneficiary/ies with a lump sum equivalent to four times the employees's salary in cases of death whilst in employment at Battersea.

Uniforms for all Operational Employees

Free uniform is provided for all operational and clinic employees.

Veterinary Treatment of Employees Animals

We provide cost price veterinary treatment for employees with ex-Battersea dogs and cats.

Discounted Pet Insurance

We offer employees a 20% discount off the cost of Petplan insurance.

Discounts in our Shops

We offer our employees a 25% discount in our shops.

Professional Membership Fees

After two months service, employees in roles where ongoing membership of a recognised professional body, (where this membership is gained through a qualification), is an essential requirement in the person specification for their job can claim the cost of one membership fee per year up to a maximum of £400.

Sabbatical Leave

Employees who have worked with us for five years or more can request six months unpaid sabbatical leave for personal or professional development, such as learning new skills or travel.



Battersea Dogs & Cats Home is a charity registered in England and Wales (206394)
Registered Office: Battersea Dogs & Cats Home, 4 Battersea Park Road, London, SW8 4AA.