



Recruitment pack

2026



Bowel Cancer UK
Beating bowel cancer together



“ A year after my bowel cancer diagnosis, I shared my story with Bowel Cancer UK. Since then, I’ve had some fantastic opportunities to raise awareness of the disease and talk about my journey in the press, and on the charity’s website and social media channels. I’ve been really grateful for these opportunities and hope that they will help give hope to others in a similar situation to myself. ”

Mohammad

Welcome from our Chief Executive, Genevieve Edwards

I'm delighted you're interested in joining our team at Bowel Cancer UK.

Our task is urgent. Every 30 minutes someone dies from bowel cancer, making it the UK's second biggest cancer killer. But it shouldn't be this way, because bowel cancer is a treatable and curable disease, especially if diagnosed early.

Bowel cancer is also the fourth most common cancer in the UK – nearly 43,000 people are diagnosed each year. It can affect anyone, but it's most common in those over 50. The scale of our task cannot be underestimated.

Bowel Cancer UK is the UK's leading bowel cancer charity. We're determined to save lives, improve the quality of life for everyone diagnosed with the disease, and support all those affected by bowel cancer in the UK. Our vision is a future where nobody dies of the disease.

Thanks to the generosity of our community, we're in a privileged position to be able to grow our staff team to deliver our ambitious new strategy, which we launched in 2023.

There are huge challenges facing bowel cancer patients across the UK, and our community needs us now more than ever. We're building a team of enthusiastic, dedicated people who can help us achieve our goal - a future where nobody dies of bowel cancer.



Genevieve Edwards, Chief Executive

You'll join an organisation with a vibrant, dynamic and 'can-do' culture. You'll help the charity operate to the highest standards, raise more money, invest in research and support services, influence national policy and make a meaningful and impactful contribution to the lives of those affected by bowel cancer.

If this sounds like the challenge for you, we'd love to hear from you.

If you'd like an informal discussion about working with us, please contact jobs@bowelcanceruk.org.uk

Thank you for your interest.

Why work with us?

At Bowel Cancer UK our work is productive and rewarding. We strive to meet the standards of a good employer within the charity sector and to do what we can to achieve balance in our working lives. We're committed to quality and the attainment of professional standards of excellence in every area of our work.

You can expect a well-structured and focused working environment with clarity about performance expectations and work standards in line with our competency framework. We want everyone to know how they can contribute to achieving our goals and feel part of a supportive team with high ambitions. You'll have regular meetings with your line manager, an annual appraisal, and a personal development plan.

Flexible working

You'll have the flexibility you need to achieve a good work-life balance. You can work at home, in our Hub in London, or a mixture of both and can also request flexible working hours. Everyone is provided with a laptop to ensure they can fully access our IT systems from home, or on the go.

Financial benefits

We operate a Group Personal Pension Scheme and provide a contribution of 5% of salary while you contribute 4%. From your first day of employment, you'll benefit from a life assurance scheme offering four times your salary in case of death in service. You'll also have access to an annual season ticket loan.

Medicash is available to all staff from day one, offering cashback on everyday healthcare costs like dental, optical, and physiotherapy, plus extra benefits such as discounted gym membership, virtual GP access, counselling sessions, and free cover for up to four children.

Leave entitlements

You'll have 27 days annual leave (pro rata) plus eight bank holidays. We also close for three days over Christmas and these days are given in addition to the leave entitlement. A range of paid family leave, study leave and compassionate leave are available to all our people. Sometimes you may need to carry out extra work outside normal working hours – for example to cover evening meetings or a weekend event. In these situations, we offer time off in lieu (TOIL) to compensate for the extra time worked.

Wellbeing benefits

We have trained Wellbeing/Mental Health Champions, Menopause Champions and Endometriosis champions who are available to provide further support and signposting as required.

We're looking to increase the diversity within our team and welcome applications from anyone who has the skills and qualities outlined in the job description or who believes they have the ability to learn them fast. What's important isn't your level of education or the opportunities which you've had, it's about you and how you seize the prospects ahead of you.

About Bowel Cancer UK

Our history dates back to 1987, when Patrick Dolan set up The Britta Dolan Memorial Cancer Fund, after his wife, Britta Dolan, died from bowel cancer. We became known as Bowel Cancer UK in 2005 when we merged with another charity and today, we're the UK's leading bowel cancer charity.

Our vision

A future where nobody dies of bowel cancer.

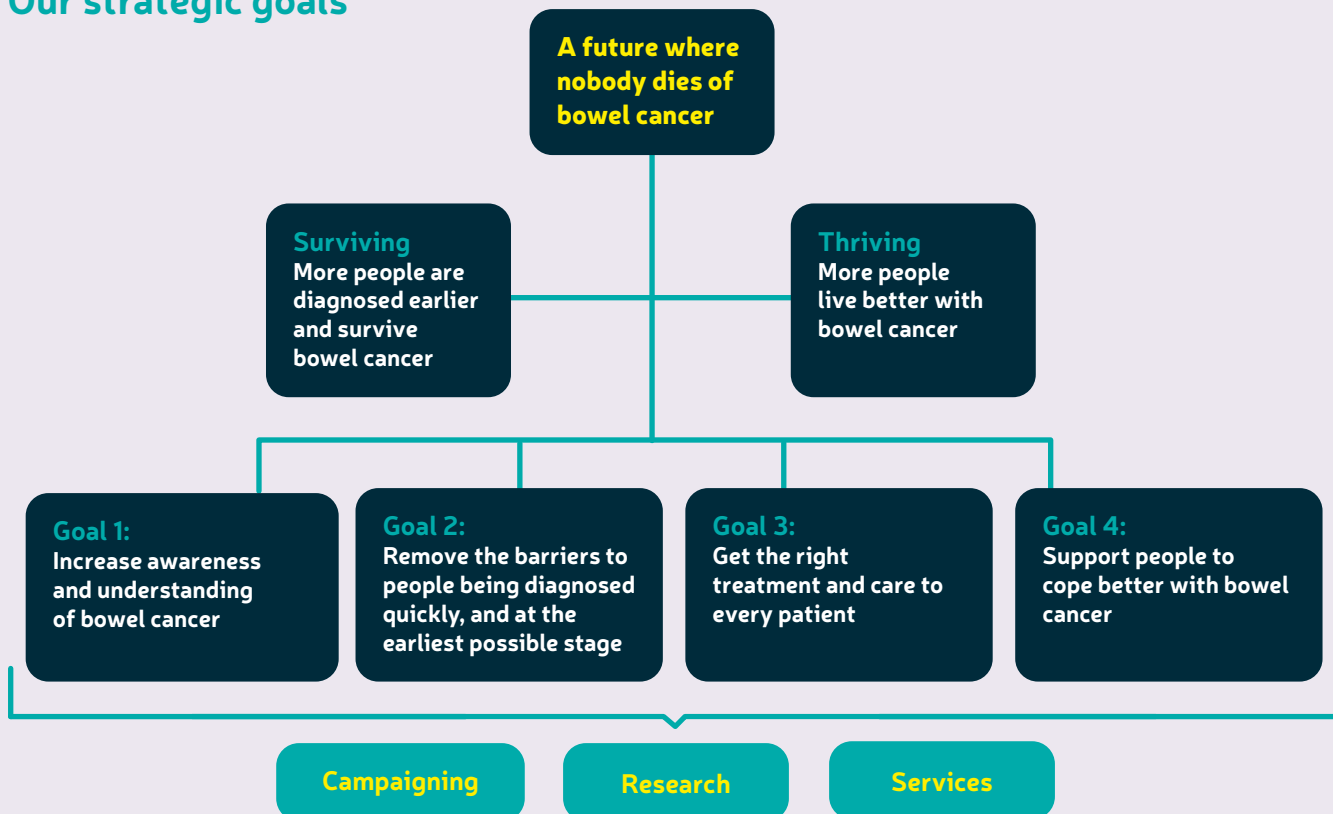
Our mission

We're determined to save lives and improve the quality of life of everyone affected by bowel cancer. We support and fund targeted research, provide expert information and support to patients and their families, educate the public and professionals about the disease, and campaign for early diagnosis and access to the best treatment and care.

Our values

Our values are caring, ambitious, supportive, expert and open. This means we always strive to be patient and family focussed, compassionate and human, evidence-based, ambitious and determined, and welcoming and inclusive.

Our strategic goals



2024 in numbers



We provided over **4,367,000** moments of support to people affected by bowel cancer



We supported almost **200,000** people through our forum, Facebook groups, Peer Support Line, Ask the Nurse service and health information



We shone a spotlight on bowel cancer through partnerships with **Andrex, Celebrity Big Brother, Hollyoaks** and many more



More than **100** volunteers delivered **190** different volunteering roles



We visited **10** cities across the UK with our roadshows, speaking to more than **6,000** people about bowel cancer



We launched our innovative new behaviour change campaign, **Tell Your GP Instead**



We funded new research grants totalling almost **£500,000**



Every **£1** we awarded in research grants led to a **further £8** being invested in research



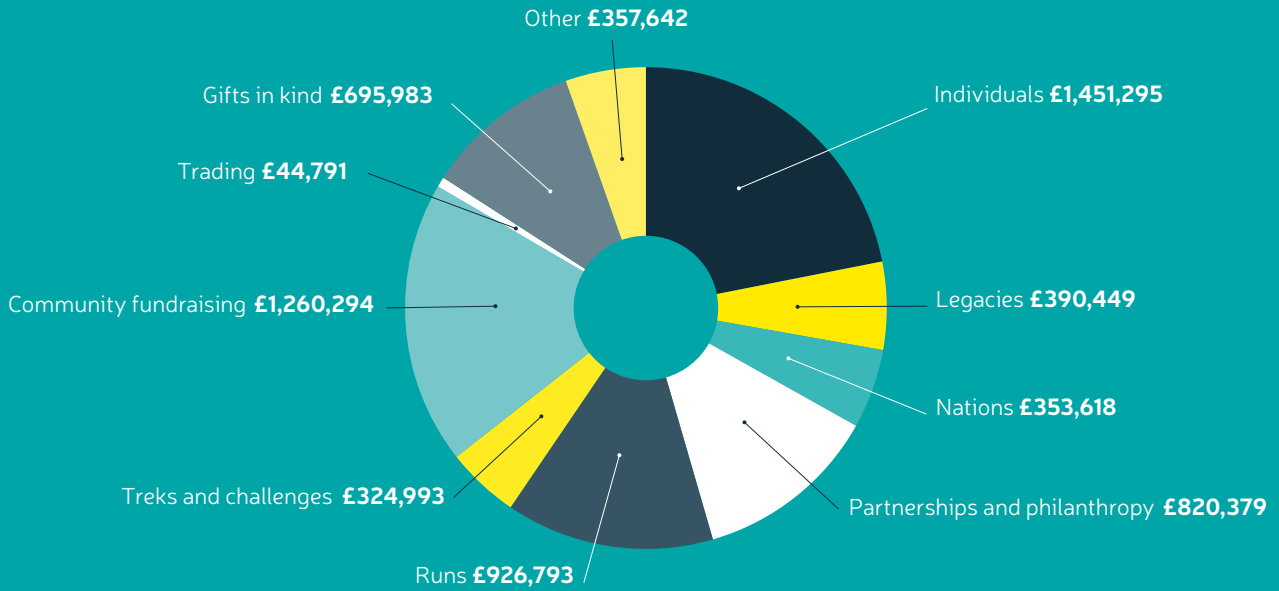
8,525 people donated and fundraised for us in 2024



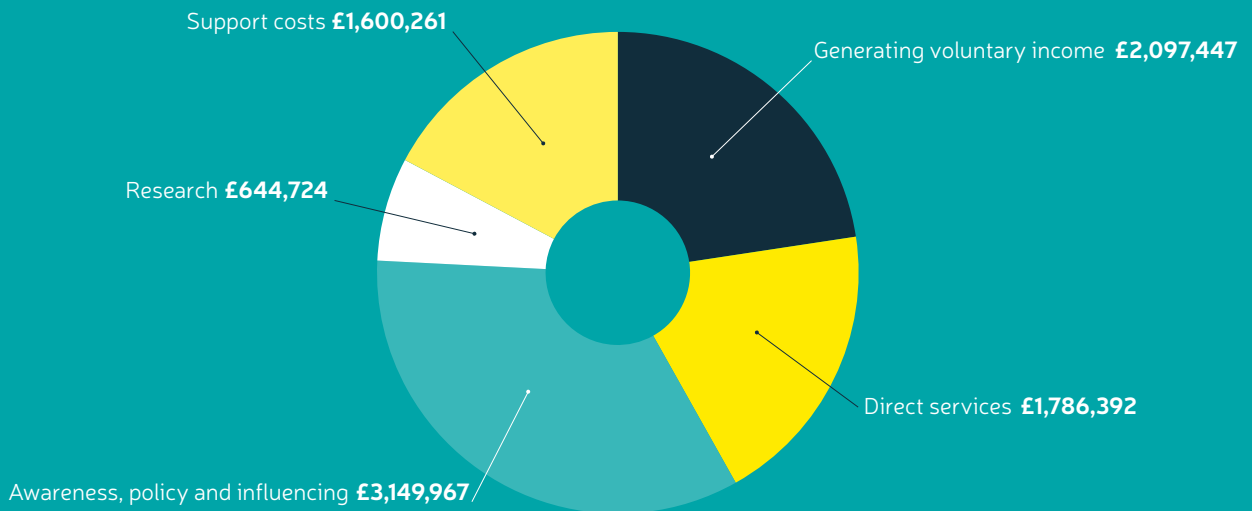
Our generous supporters raised more than **£6.6 million** from donations of time, money, goods and services

Financial summary 2024

Where our money comes from



How we spend our money





“

I fundraised for Bowel Cancer UK in memory of my sister Sharan, who passed away from bowel cancer, in order to keep her memory alive and to raise awareness of the disease. I chose to support this charity so that they can continue the incredible work they do, as I don't want anyone to have to experience what my sister or my family have been through.

”

Manisha, pictured with her sister Sharan




Bowel Cancer^{UK}
Beating bowel cancer together

Bowel Cancer UK is the UK's leading bowel cancer charity. We're determined to save lives and improve the quality of life of everyone affected by the disease.

We support and fund targeted research, provide expert information and support to patients and their families, educate the public and professionals about bowel cancer and campaign for early diagnosis and access to best treatment and care.

To donate or find out more visit
[bowelcanceruk.org.uk](https://www.bowelcanceruk.org.uk)

 /bowelcanceruk

  @bowelcanceruk