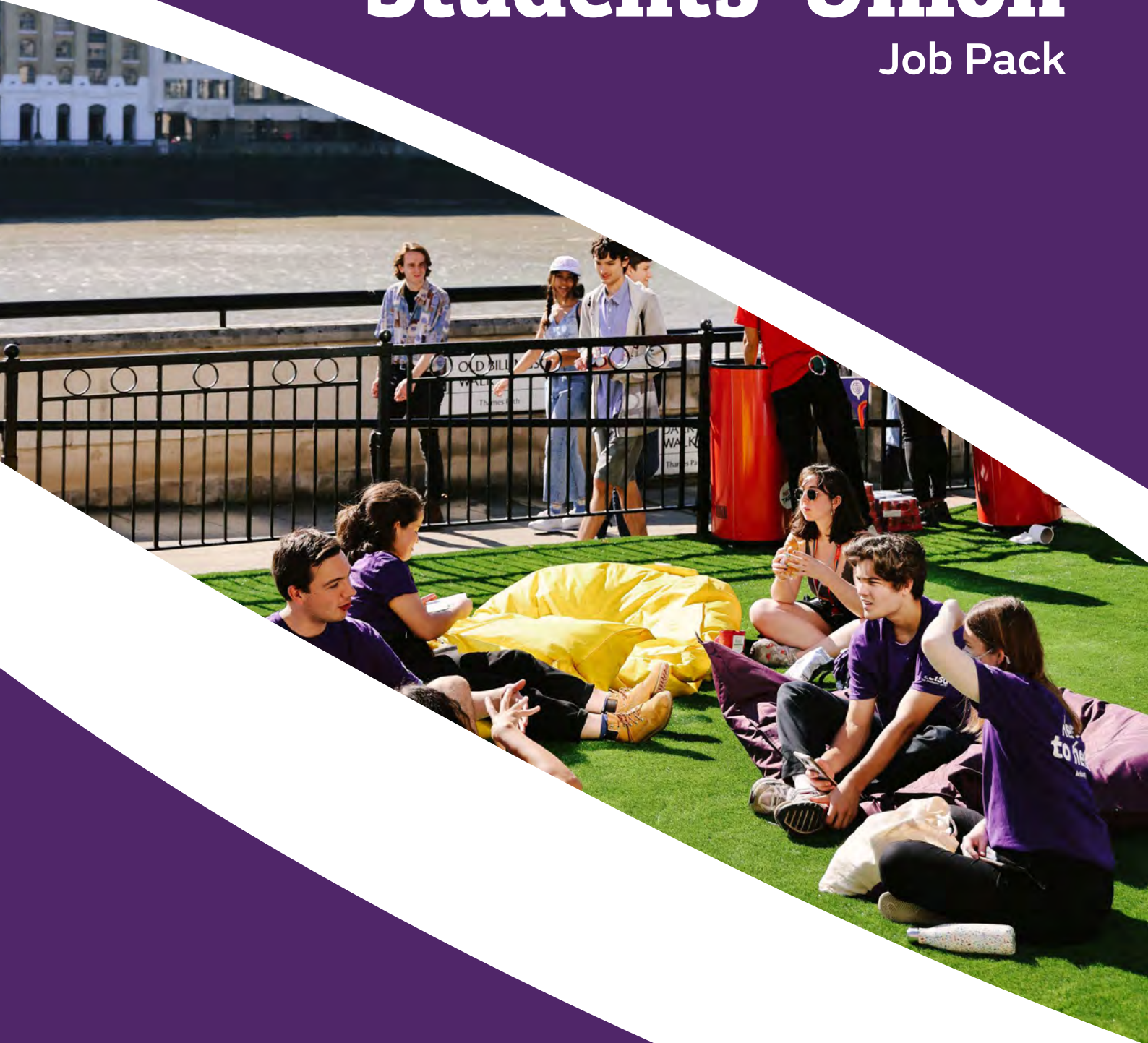




King's College London Students' Union

Job Pack





About Us

King's College London Students' Union (KCLSU) is the oldest students' union in the UK. We were founded in 1873 as the Union Society of King's College London and then changed our name in 1908 to KCLSU.

KCLSU is where we help King's College students to make friends through joining student groups and sports clubs such as football, dance or the coffee appreciation society, or by meeting new people in our cafes and bars. Should students run into any difficulties during their time here at University, we also give them guidance and advice about academic problems and focus on uplifting and supporting their wellbeing by organising activities and working with students to help with other issues. KCLSU offers a fun, social and flexible work environment attracting talented professionals who want to make an impact on a diverse student body!

We welcome you to join us.

Our Vision

A future where every member of KCLSU has the opportunity to thrive.

Our Mission

Together with our members we are a union of students where individuals love their university experience, are involved in shaping the future, have the power to make change and connect to each other openly.

Our Values

We strive by our four values of being **Inclusive, Collaborative, Open** and **Brave**. These are what we are as people within an organisation, and how we go about our work.

King's College London Students' Union is an equal opportunity employer.



Message from the CEO

Welcome to KCLSU. We are delighted to have your interest!
At KCLSU, our vision is to create a future where every student has the opportunity to thrive and we seek like-minded individuals to help achieve this goal. KCLSU is the oldest Students' Union in the UK and together, with your expertise, you will help to provide the tools for King's College London students to feel a sense of belonging, and to have a platform to raise their voices while looking forward to a bright future. Our HR Department looks forward to receiving your application and matching your skill set with our opportunities, and should you be successful in joining us – I am positive that our organisation will greatly value your contribution!

Denis Shukur
Chief Executive Officer

Our Teams

KCLSU relies on the collaboration of many likeminded people to provide support for King's College London students. We're built up of:

Community & Representation

Elected student leaders work to **unite student communities with the relevant decision makers** to ensure student wants and needs are met and that all our communities have a say.

From Student Officers, to those that initiate a campaign, all of our Student Leaders look to bring friends, communities and groups together to **instill change for the good of the King's Student Body**.

Academic Reps play a crucial role in shaping the learning, teaching and research experience/environment. Students in each program, department and/or faculty select **reps to represent their views** whilst we ensure their voices get heard.

Advice & Wellbeing

KCLSU Advice provides **free, confidential and impartial academic advice to students** about issues affecting their studies. We're here to help students in a way that is non-judgmental, straightforward and empowering.

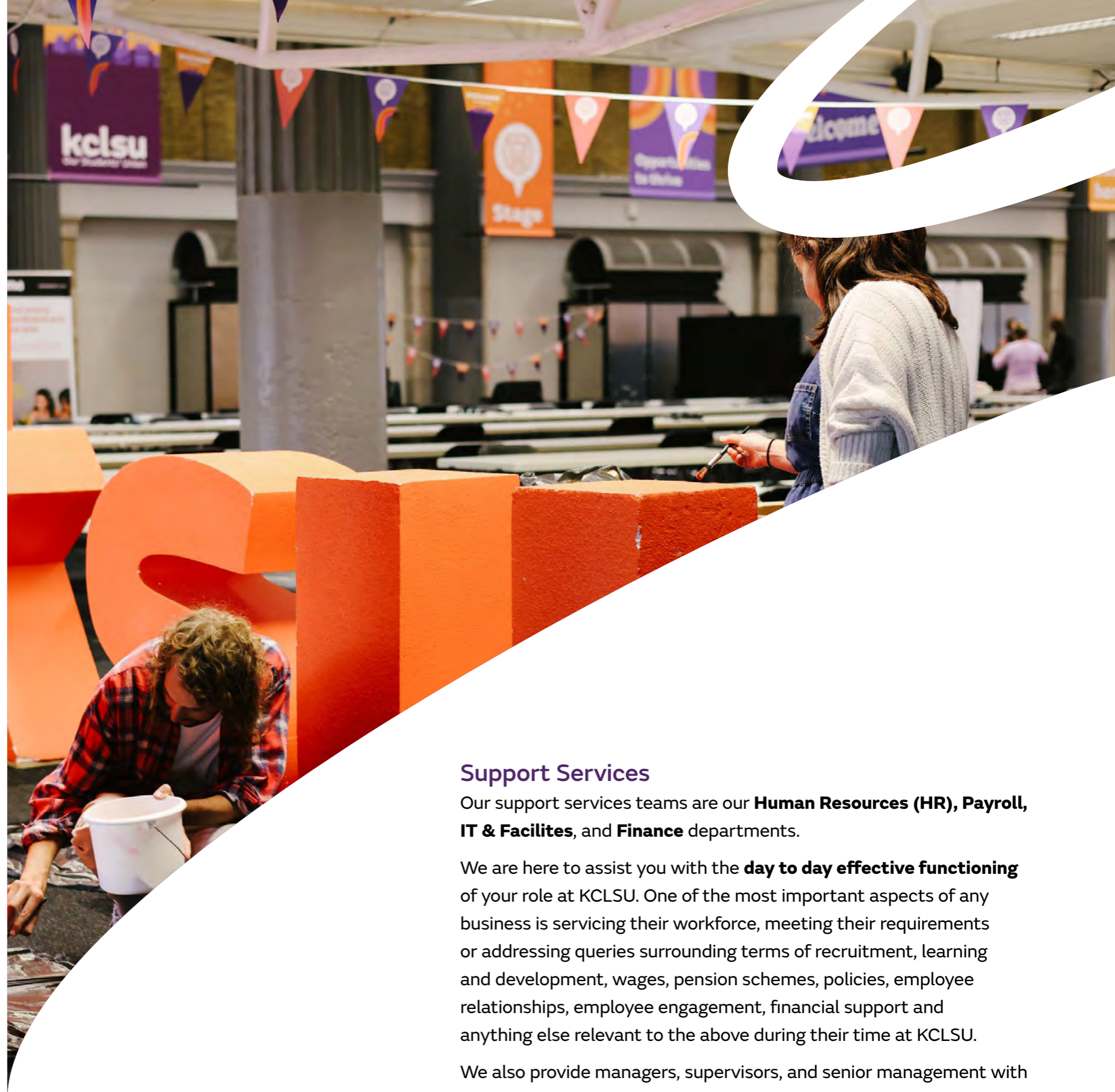
Wellbeing has become a pivotal part of KCLSU, providing students with the **best support in collaboration with King's University**.

We have various support groups like **Positive Peers, Black Student Talk** support group and a **Wellbeing Hub** that helps students cope with their new transition into university life.

Communications Marketing & Data

The KCLSU Communications, Marketing and Data Directorate supports the organisation in implementing strategy to **effectively amplify, communicate and showcase the work KCLSU does** in maintaining students' collective vision.

The Directorate **offers guidance and expertise** to the organisation on specific focal points of communications, messaging, brand, and delivery **aiming for best practice across all our print and digital channels**.



Support Services

Our support services teams are our **Human Resources (HR), Payroll, IT & Facilities**, and **Finance** departments.

We are here to assist you with the **day to day effective functioning** of your role at KCLSU. One of the most important aspects of any business is servicing their workforce, meeting their requirements or addressing queries surrounding terms of recruitment, learning and development, wages, pension schemes, policies, employee relationships, employee engagement, financial support and anything else relevant to the above during their time at KCLSU.

We also provide managers, supervisors, and senior management with **comprehensive support services focused on their specialised needs**.

Our IT and Facilities team ensure that student and non-student staff can **work in their core areas as smoothly as possible**.

They assist in the onboarding process, helping to **set up equipment and technology access**, whilst keeping Health and Safety in check.

Our Venues

All our commercial spaces employ student-staff and funds from the venues go back into running services for students! They are:

The Shack

Bush House, The Strand

The Shack is an **alcohol-free cafe** on the ground floor of our Union at **Bush House**, where students can enjoy great quality coffee, sandwiches, pastries and other grab and go snacks at extremely student-friendly prices. The cafe sits in a **vibrant, open space** with multi-purpose seating, a games area, nearby cinema, performance area and a host of other facilities.

The Vault

Bush House, The Strand

The Vault is a **sports bar, restaurant and nightclub**. It serves food right through from breakfast to dinner, with lots of activities and day/night events, including club nights and opportunities for private hire.

The Union Shop

Bush House Arcade, The Strand

Located at **Bush House Arcade** on **the Strand**, The Union Shop is the only place for **King's College London branded merchandise**; think hoodies, tees, bags, accessories, gifts and stationery.

The Shed

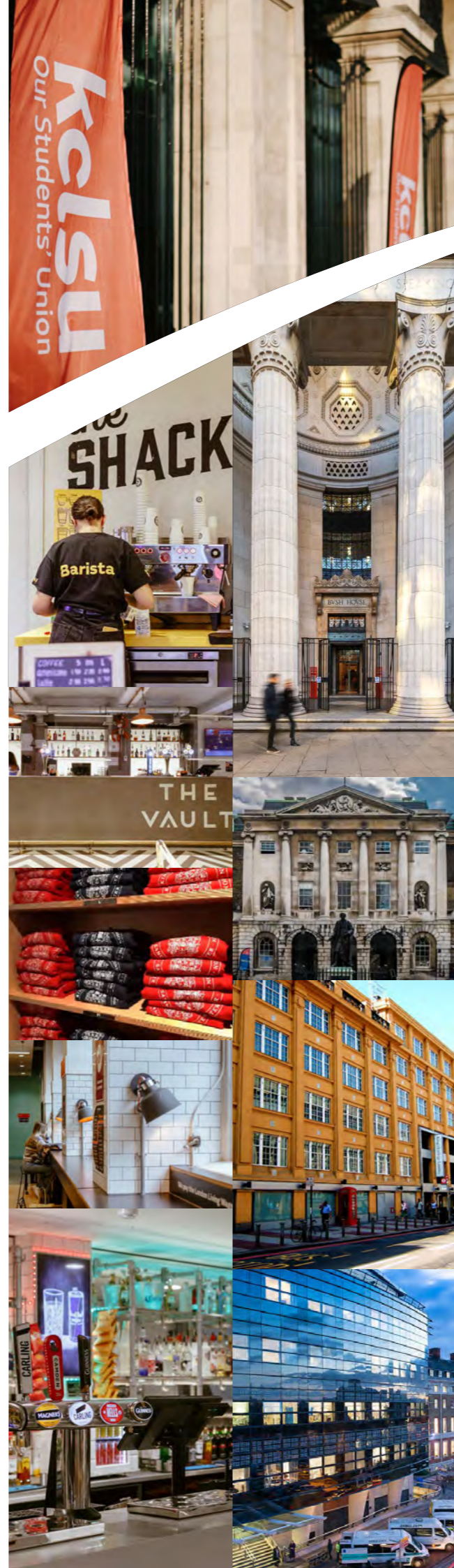
Guy's Campus

The Shed is our **alcohol-free Guy's campus coffee shop** serving fresh food, coffee, baked goods and frappes, providing that much needed boost for the day from morning to evening.

Guy's Bar

Guy's Campus

A crucial part of our Medics and Dentists history but open to all, Guy's Bar **opened in 1882** and has been a cornerstone of the **GKT** (the medical school of King's College London and the three hospitals, Guy's Hospital, King's College Hospital and St Thomas' Hospital) community since. The Bar hosts events like quizzes, karaoke nights and **Sports Nights** for students.



Our Spaces

We work across four campuses in our mission to support the student populus. These locations are:

The Strand

South East Wing, Bush House, 300 Strand, London | WC2R 1AE

The Strand Campus is home to:

- ☞ Faculty of Arts & Humanities
- ☞ The Dickson Poon School of Law
- ☞ Faculty of Natural & Mathematical Sciences
- ☞ Faculty of Social Science & Public Policy (also at the Waterloo Campus)
- ☞ King's Foundations
- ☞ King's Business School

Guy's

Boland House, Great Maze Pond, London | SE1 9RT

Guy's Campus is home to:

- ☞ Faculty of Life Sciences & Medicine (also at the Waterloo Campus)
- ☞ Dental Institute

Waterloo

Franklin-Wilkins Building, Stamford Street, London | SE1 9NH

The Waterloo Campus is home to:

- ☞ Florence Nightingale Faculty of Nursing and Midwifery
- ☞ Faculty of Life Sciences & Medicine (also at Guy's Campus)
- ☞ Faculty of Social Science & Public Policy (also at the Strand Campus)
- ☞ London Dental Education Centre (LonDEC), part of the Dental Institute (also at Guy's and Denmark Hill)

Denmark Hill

16 De Crespigny Park, London | SE5 8AF

The Denmark Hill Campus provides facilities for the Faculty of Life Sciences & Medicine, the Dental Institute, and is the home of the Institute of Psychiatry, Psychology and Neuroscience and the Champion Hill Residence.

Our Benefits

Alongside our welcoming organisation, we offer a competitive benefits package.

We have a strong commitment to supporting our staff to grow and develop within their role as well as having an active interest in their well-being.

Staff can take advantage of flexible hybrid working, and our holiday entitlement is 25 days per annum, plus bank holidays and 8 discretionary closure days. See below for what we offer in terms of allowances, various discounts, and personal development opportunities.

- Hybrid Working Policy
- Pension Contribution
- Interest-Free Season Ticket Loan & Computer Loan
- Cycle to Work Scheme
- Enhanced Sick Pay
- Enhanced Maternity and Paternity Pay
- Eye tests & single focal glasses allowance
- 25 days annual holidays plus bank holidays and additional closure days
- Discounts at KCLSU Venues
- Wellbeing allowance
- Employee Assistance Programme
- 'No Meeting Friday' ethos
- KEATS Learning Platform & LinkedIn Learning subscription
- Death in Service
- Access to King's College London Libraries

The Role

Job Title

Accountability

Reports To

Location

Contract Type

Hours

Salary & Band

Application End Date

Key Responsibilities

What success looks like in this role



The Role

Job Specification

The Candidate

Candidate Specification

kclsu
world

The logo features the text 'kclsu' on the top line and 'world' on the bottom line. A thick white swoosh graphic starts from the right side of the 'd' in 'world', loops upwards and to the left, crossing over the 'u' in 'kclsu', and then loops back down and to the right, ending under the 'd'.