

**magic
breakfast**
fuel for learning

Working at...
**MAGIC
BREAKFAST**




magicbreakfast.com




Keep up to date on our Socials!

 /magicbreakfastuk

 /magic_breakfast

 /magicbreky

 /magic-breakfast-charity

Welcome!

CONTENTS

CEO's message

Our mission

Strategic objectives

Our magic values

Benefits

Job description

"Hunger has a massive impact on behaviour and engagement. Pupils now arrive at classrooms ready to learn. They have had their breakfast time to socialise with peers and staff and they are ready to engage. This has made a really big difference to the school day."

**Magic Breakfast Partner School,
Stockton on Tees**



**TOGETHER, WE ARE
MAKING A PROFOUND
DIFFERENCE IN THE
LIVES OF CHILDREN,
one nutritious
breakfast at a time.**



CEO'S message

Hello!

Thank you for your interest in becoming a part of our team at Magic Breakfast!

On behalf of the entire team at Magic Breakfast, I'd like to extend a warm welcome as you explore the opportunity to join us.

We're thrilled that you are considering becoming part of our mission to remove hunger as a barrier to learning. Sadly, despite **over 20 years of providing breakfasts in schools and campaigning for change**, the level of hunger in classrooms is rising.

of creating positive change in the lives of children and their communities. **We celebrate innovation, collaboration, and the power of collective action**, and we are excited to welcome new perspectives that will enrich our work.

Throughout the recruitment process, please ask questions and learn more about our work. We will also plan a tailored induction that supports you to build your knowledge and understanding. **Your insights and enthusiasm are valuable to us**, and we are eager to discover how your skills align with our mission.

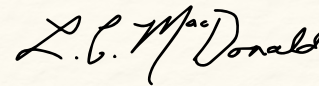


1 in 4
CHILDREN ARE AT RISK OF STARTING THEIR DAY TOO HUNGRY TO LEARN.

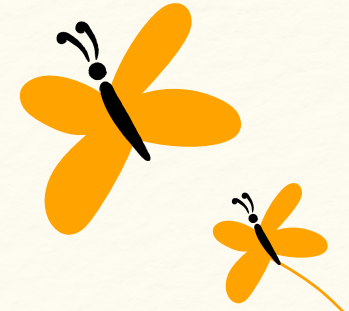
The magic of Magic Breakfast is the people. You'll read in this pack how our values and mission celebrate and enable this. Joining Magic Breakfast means becoming part of a diverse and dedicated team, driven by the common goal



Wishing you the best in your application journey.



Lindsey MacDonald
Chief Executive
Magic Breakfast






OUR mission

Children should be hungry to learn, but millions of children are hungry for breakfast.

In the UK **one in four children experiences food insecurity**. Working with schools in disadvantaged areas across England and Scotland **Magic Breakfast empowers every child and young person to reach for their dreams and thrive**, one breakfast at a time. As a registered charity offering grass-roots support, we also focus on being part of the solution through our campaigning, research and advocacy work with politicians and decision-makers. **We are determined to end child morning hunger for good.**

**TO END
morning
hunger**
AS A BARRIER TO LEARNING



“Magic Breakfast is an immensely rewarding place to work. I feel privileged to be able to meaningfully contribute to our mission of removing hunger as a barrier to learning.”

Manager, Fundraising Team.



STRATEGIC objectives

PROVIDING NUTRITIOUS BREAKFASTS



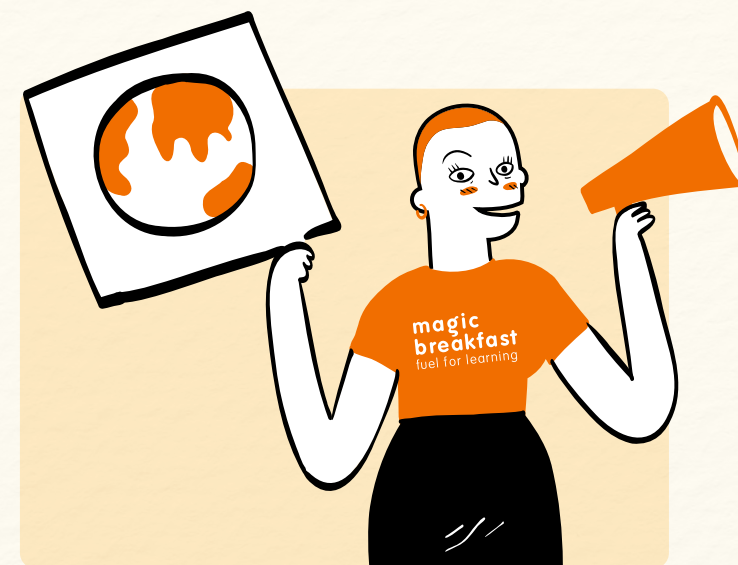
Ensure a nutritious and filling breakfast is provided to as many pupils at risk of hunger as possible

BUILD A MOVEMENT FOR CHANGE



Build a movement to push for a solution to child morning hunger

REACH OUR GOAL RESPONSIBLY



To operate efficiently and responsibly with greater internal and external collaboration

OUR magic values

Our values sit at the very heart of what we do.

They permeate our ways of working, decision-making and policies. They ensure we are the best possible version of ourselves – as individuals, teams, and as one Magic Breakfast.

Equality, Diversity and Inclusion (EDI) is incredibly important to us, and it is considered in everything that we do. We continue to work on our progressive EDI strategy and want to remove as many barriers to work as possible. We value and welcome everyone.

IF YOU'RE PASSIONATE ABOUT IMPROVING THE LIVES OF CHILDREN AND YOUNG PEOPLE...

We want to hear from you!



CHILDREN AND YOUNG PEOPLE ARE AT the heart of everything we do



Compassionate

We care and want to help.



Open

We are transparent and inclusive.



Brave

We will speak up and speak out even if it's hard.



Collaborative

We believe in the power of diversity and collective action.



Solution-Focused

We are ambitious and impact-led.



BENEFITS

because we think you're amazing!

ANNUAL LEAVE

We're aware of how incredible our staff are, so we provide **25 days annual leave, in addition to bank holidays and end of year closure.**

We value loyalty so we offer **additional days leave for each year of service** (up to 5 additional days).



FLEXIBLE WORKING

We offer **flexible working**. We want you to feel as comfortable as possible when working for us. We also value **home working** with the opportunity to use our modern office space in the heart of Brick Lane, London.



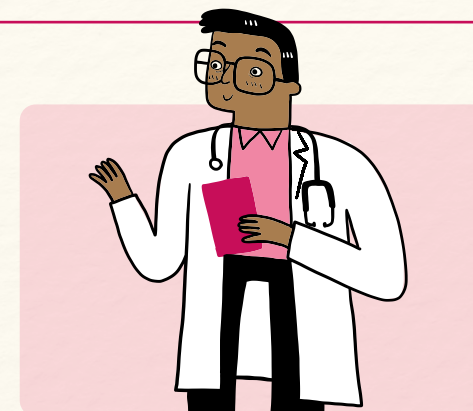
WELLBEING WEDNESDAY

Extended paid lunch break on Wellbeing Wednesdays. We understand the importance of headspace – we encourage you to use this time for you!



HEALTH PLAN

Cash back health plan with Westfield Health and a focus on staff wellbeing through free seminars and resources. **Employee Assistance Programme** includes short term counselling.



BENEFITS

because we think you're amazing!

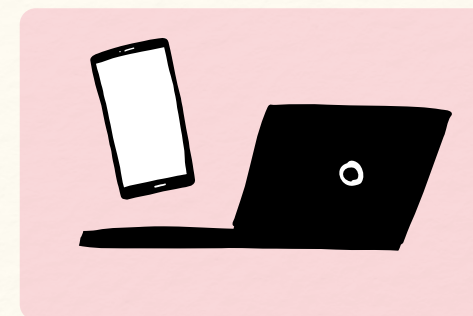
PENSION

Access to the **NEST pension scheme** with an employer contribution from 4-6%.



SALARY SACRIFICE SCHEME

Ability to purchase electronics tax free and cost to be deducted from monthly salary.



WORK LIFE BALANCE

We have a range of **family friendly, menopause and maternity policies** designed to support individuals with a happy work life balance.



WE CARE

Dedicated groups to ensure a focus on:

- Equality, Diversity and Inclusion
- Our Environmental Mission Statement
- Wellbeing at Magic Breakfast, including trained Mental Health First Aiders

