



Our Second Home Volunteer Application Pack

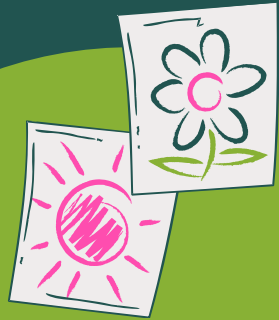
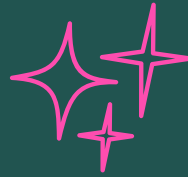


Table of Contents

Who We Are: Our Values & Mission	02
Our Impact (2025): Our Reach, Growth & Outcomes	03
What Is an OSH Residential? Activities & Camp Life	04
What's Expected of an OSH Leader	05
Why Be an OSH Leader? Training, Support & What You'll Gain	06
About You: Who We're Looking For	07
What Our Leaders Say: Testimonials & Quotes	08
2026 Residential Dates	09
Other Volunteering Roles with OSH	10
Volunteer Recruitment Process and How to Apply	12



Our Second Home (OSH) is a youth movement that empowers young refugees and migrants to flourish in the place they now call home.

COMMUNITY

Every year, thousands of young people arrive in the UK full of potential. Through creativity, friendship, and shared experiences, we help them build confidence and leadership.

LEADERSHIP

Our residential camps are the first step on that journey — a space to learn, laugh, and grow together.

IDENTITY

For our impact, click on the photo!



Learn more about us:



[On our website](#)



[Check out our video!](#)

OUR IMPACT 2025

12

Residential trips delivered in 2025 (up from 8 in 2024)

1,008

Young people took part in OSH activities in 2025 in both London and Bristol (up from 826 in 2024 and 453 in 2023)

398

Residential attendances

+

610

Non-residential attendances including weekly youth hubs in London and Bristol

26

New leaders graduated, including our first Bristol-only cohort (up from 7 graduates in 2024)

69%

of participants told us they had close friends in the UK after the residential,

79%

of participants described themselves as being more comfortable communicating in English after the residential.

WHAT'S AN OSH RESIDENTIAL?

Think campfires, nature, games, and many new friendships!



Our residentials are 2, 4 or 5-night activity camps for young refugees and asylum seekers aged 14–18.

They're all about:

- Having fun and building confidence
- Exploring identity and belonging
- Learning leadership skills in a safe, welcoming space

At the heart of every camp is our incredible team of volunteer leaders -people like you who bring energy, kindness, and creativity.

SOME OF WHAT WE DO!

BONFIRE NIGHT **MOVIE NIGHT** **COSTUMES**
FOOD **SPORTS** **ARTS AND CRAFTS**
PARTIES **EDUCATION** **OLYMPICS**
MUSIC **CULTURE** **CLIMBING** **DANCING**
NATURE

What's Expected of an OSH Leader



AS AN OSH LEADER, YOU'LL:

OSH Leaders will be responsible for facilitating the camp, and will be directly in contact with, and responsible for, the participants.

Leaders are expected to model positive behaviour, stay actively involved, and follow our [volunteer guidelines](#) at all times.

YOU ARE RESPONSIBLE FOR:

- Building real connections with participants
- Creating and leading fun, inclusive activities
- Making sure everyone feels safe and supported
- Setting a great example for the group
- Raising any concerns and follow safeguarding procedures

You'll be "on duty" the whole camp — sharing meals, laughter, and late-night chats.

Don't worry: we'll train and support you every step of the way.

WHY BE A LEADER?

AS AN OSH LEADER, YOU'LL GAIN:



Training in youth facilitation, trauma-informed practice, and safeguarding.



Real leadership experience on residential camps.



Ongoing mentorship and support, with clear progression pathways.



Certificates and references to support your future goals.



Joining a diverse, welcoming, and passionate network.



Meaningful experiences that build confidence, skills, and connection.

You'll also receive:

- Travel expense coverage, so cost isn't a barrier
- Your official OSH Leader t-shirt
- Support from dedicated Welfare Leads and Officers, plus daily team check-ins



Most importantly, you'll be part of a community that values care, compassion, and leading with kindness.



Lead with kindness, curiosity, and care — that’s what OSH leadership is all about.

Bonus Skills

Desirable but Not Essential

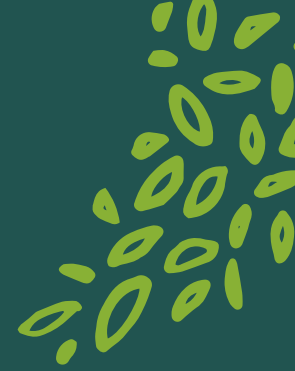
- Experience with refugees or asylum seekers
- Experience supporting young people with additional needs
- Languages: Arabic, Dari, Pashto, Tigrinya, Somali
- Music, art, drama, or sports leadership
- First Aid training

We especially welcome applications from people with lived refugee experience, from global majority backgrounds, or who identify as LGBTQI+.





WHAT OUR LEADERS SAY



Don't just take our word for it — here's what past leaders say:

"OSH felt great, it felt like family. They all made me feel really welcome. They never made me feel like I'm a stranger, even though I didn't know anyone. They show me love. I haven't had that feeling for a long time."

"Having welfare support made me feel comfortable and confident."

"The leaders were all awesome – it was incredible to work in a team full of hardworking, inspiring people."

"Seeing the young people burst out of their shells was just incredible."

"It honestly surpassed anything I could have hoped for."



2026 RESIDENTIAL DATES

We are holding residential trips during the following dates this year. Each trip will have an in-person training day in preparation. Unless stated otherwise, trips are within 2 hours drive of London:



Where possible, volunteers are advised to attend our Leaders Training Weekend. This is strongly encouraged for new volunteers especially.



Other Volunteering Roles with OSH!

Volunteering with OSH does not only mean leading on residentials. We have recently introduced a range of new volunteering roles that involve different types of involvement and varying levels of time commitment.

Behind-the-Scenes Leader on Residentials

Prefer leading behind the scenes rather than leading activities? Help the smooth running of residentials by supporting in the kitchen, setting up spaces, and assisting leaders with activity preparation. If you select this option, You will find a list of our residential dates and you can choose the ones you're happy to lead on.

OSH Hub Volunteer

Support OSH hub sessions (weekly or ad-hoc) for young people aged 14–19 by helping create a safe, welcoming, and fun environment. Volunteers support check-ins, games, activities, trips, and shared meals.

Online Classes Volunteer

Support our online training sessions for LiTs by delivering maths and English classes. Sessions are fully designed in advance — your role is to deliver the content and support learners.

New Volunteers & LiT (Leader in Training) Alumni Mentor (Residential-Focused)

Provide 2–3 hours of online support in the lead-up to a residential to help new or less experienced volunteers plan their activities and build confidence in their roles. You do not need to attend the residential to take on this role. This role is for experienced leaders who have supported at least 5 residentials (with OSH or elsewhere).

LiT Alumni Mentor (General)

Offer one-to-one or small-group mentoring to our LiT alumni, supporting them with job search, decision-making, and navigating life and opportunities in the UK.

Activity Planning Support

Have ideas for activities or games but can't commit to leading at residentials? Share activity plans with us in advance, and we'll ask other leaders to deliver them during sessions or residentials.

Workshop Facilitator

Deliver structured workshops to young people at residentials or hubs on agreed topics, using prepared materials or co-designing sessions with the team. You may also facilitate training sessions for volunteers on topics such as leadership, activity design, safeguarding, trauma awareness, team building, OSH values, or other relevant areas.

Chef or Sous-Chef

Prepare and serve meals for large groups during residentials. This role is ideal for volunteers with experience cooking in kitchens or catering for groups, but interest and willingness to learn are equally welcome. We can support you to obtain a Level 2 Food Hygiene Certificate if you don't already have one.

Cycling or Camping Trips Volunteer

Support one-day or multi-day cycling trips or weekend camping trips with young people, helping ensure everyone has a safe and positive experience. For cycling trips, volunteers should be confident road cyclists. Experience as a bike mechanic, first aider, or ride leader is especially helpful (but not essential). Having a van to transport bikes or camping equipment, or acting as a safety vehicle, is a big bonus.

Lock-Up Support

Hold the key to our lock-up in Hornsey, North London, and open it for drivers on the first and last day of residentials. Support with stock management and help keep the lock-up organised and tidy.

Other / Your Own Ideas

If you have a different skill or idea for how you'd like to support us, we'd love to hear it — we're always open to new ways of getting involved.



VOLUNTEER RECRUITMENT PROCESS

★ Application

Complete the application form and wait for an email from us.



★ Interview

If your application is successful, we'll invite you to an informal online interview so we can get to know each other better.



★ DBS and References

We will carry out an enhanced DBS check and contact your references.



★ Training

You'll be invited to do trainings specific for your volunteering role.



[To apply click
HERE](#)

For any questions, please email Amer at:
amer@oursecondhome.org.uk