



Join us

and make a difference to people's lives

as a

Children's Domestic Violence Advocate
(CHIDVA)



About Safenet

We provide domestic abuse services across the North West of England, including refuges for women and children, safe houses for men, community support, and extra support for those facing addiction, mental health, or other issues.

We understand the serious impact domestic abuse can have, especially on health and wellbeing, and provide support and guidance to help survivors live safely and securely.

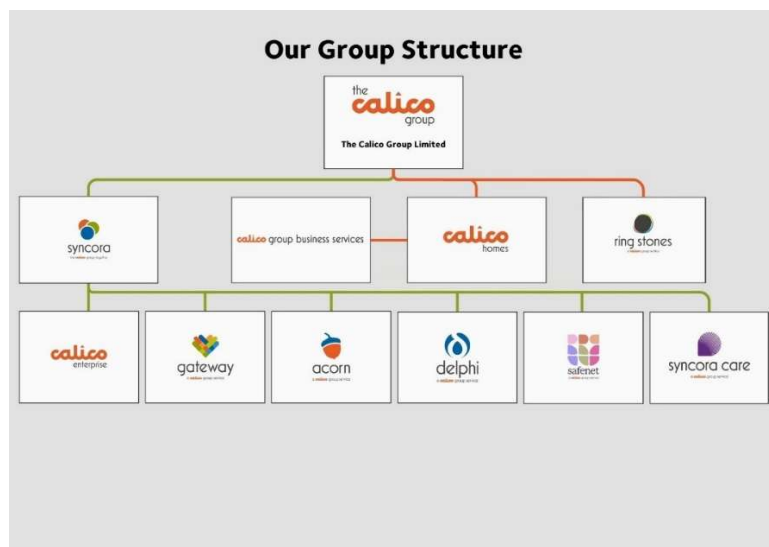
Safenet is part of the Calico Group. Here's what makes The Calico Group unique: each of our specialist companies collaborates and innovates together to have a greater impact than they could alone.

Our shared vision, flexible group structure, and expanding range of services help us adapt to the fast-changing environment and times in which we work.

"A future where everyone can live safe, happy and healthy lives free from abuse, violence and exploitation in their homes, streets and communities."

The Calico Group

Each part of The Calico Group has its own specialism, expertise and a track record of providing a complete community service in housing, healthcare, support, employability and construction.



Our Values

Our people are our greatest strength and it's only when they are engaged, and connected to our vision and our values, that we see the impact they have in our communities and on our customers' lives.



About our team

We are a specialist Safenet team working, within the Violence Against Women and Girls (VAWG) sector, committed to delivering trauma-informed, survivor-led support. Our services are shaped by the Women's Aid Federation of England (WAFE) National Quality Standards and guided by the Domestic Abuse Act 2021, which recognises the impact of abuse on both adults and children. We work collaboratively to provide safe, inclusive, and empowering support that reflects the diverse experiences of survivors and promotes long-term recovery and independence.

Working in a busy sector you will be part of a community IDVA team working in a fast paced environment supporting high risk victims and survivors of domestic abuse A team who continually adapt to the variations of work tasks/environments, who are service focused, resilient,

exercise good judgement to make the right decisions and take into consideration everyone's individual needs to create a genuine team spirit.

We recognise and respond to the intersecting experiences of survivors, acknowledging how race, gender, disability, sexuality, and socio-economic status impact recovery and safety. We are committed to anti-racist practice and actively uphold the principles outlined in our organisation's Anti-Racist Charter.

About your role:

Role:	Children's Domestic Violence Advocate (CHIDVA)
Responsible to:	Service Manager
Business Area/Company:	Safenet Community Outreach Service

The Value of This Role

The Children's IDVA (CHIDVA) plays a vital and specialist role in safeguarding and supporting children and young people affected by domestic abuse. Operating across all levels of the Continuum of Need, including those at Child Protection level, the CHIDVA provides proactive, trauma-informed interventions through both one-to-one and group work. What sets this role apart is its focus on assessing risk specifically to children and ensuring their voices are central in safety planning. Working within a multi-agency framework, the CHIDVA ensures coordinated responses that prioritise the safety and wellbeing of children. By working alongside IDVAs, the CHIDVA contributes to a whole-family approach, particularly for high-risk families involved in the MARAC process, offering immediate and ongoing support to help families move towards safety, stability, and recovery. This role is instrumental in breaking the cycle of abuse and promoting long-term resilience for children and young people.

How This role will deliver success

Success in this role means:

- Adopting a whole-family approach
- Providing high-quality, trauma-informed, and child-centred support to children and young people affected by domestic abuse.
- Working as part of the wider IDVA and Community Outreach team, the CHIDVA will ensure that every child and family referred to the service receives timely, appropriate, and culturally sensitive support.
- Working collaboratively with parents/carers and key partners to address risk, promote safety, and support recovery.
- Continuously assessing and responding to risk, implementing dynamic safety planning and delivering tailored interventions that empower children and young people to understand their experiences, build resilience, and regain control over their lives.
- Contributing to multi-agency safeguarding responses, including participation in MARAC and other partnership forums, ensuring that the voice and needs of the child are central to all decision-making.
- Supporting the wider organisation by sharing knowledge, promoting best practice, and contributing to service development through accurate case recording, monitoring, and reporting.
- Remaining up to date with legislation, policy, and professional standards, and by promoting awareness of domestic abuse and its impact on children, the CHIDVA will play a vital role in improving outcomes and breaking the cycle of abuse.

Activities Involved in This Role

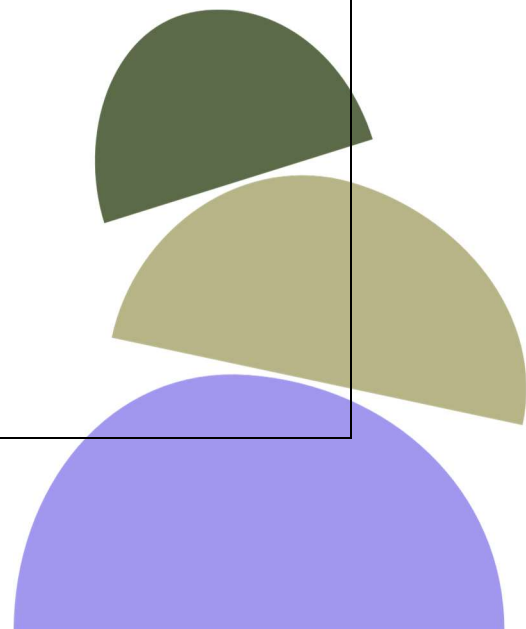
- Providing direct emotional and practical support to children and young people through 1:1 sessions and groupwork interventions, using trauma-informed and person-centred approaches.
- Supporting children and young people to understand and cope with the impact of domestic abuse, promoting self-esteem, self-worth, and age-appropriate healthy relationships.
- Empowering children and young people to make informed decisions and have their voices heard in all aspects of their support and safeguarding.
- Delivering safety planning tailored to the needs and experiences of children and young people, including those with complex needs or additional vulnerabilities.
- Promoting healthy attachment and relationships between children and their non-abusive parent/carer, using evidence-based intervention models.
- Working closely with families to identify support needs, including safety and behaviour within refuge or community settings.
- Liaising with nurseries, schools, and other educational providers to support access to learning and development opportunities.

- Providing information, advocacy, and support to families navigating the criminal justice system, including Claire’s Law, Family Court, and police processes.
- Completing and maintaining accurate case records, risk assessments (including SafeLives DASH RIC), and monitoring data in line with organisational and funder requirements.
- Participating in MARAC and other multi-agency forums, contributing to coordinated safety planning and safeguarding responses.
- Identifying and responding to signs of self-harm and suicidal ideation in children and young people, including safety planning, emotional support, and referral to appropriate mental health services.
- Working proactively with statutory and voluntary agencies to remove barriers to access and ensure a joined-up approach to support.
- Following all relevant safeguarding procedures and protocols, keeping other agencies informed of significant changes in a child or young person’s situation.
- Promoting awareness of domestic abuse within ethnic minority communities, including issues such as Honour-Based Violence, Female Genital Mutilation, and the experiences of migrant children.
- Staying up to date and compliant with all organisational, local, and national policies, procedures, and professional codes of conduct.
- Actively contribute to internal learning by sharing updates on legislation, safeguarding developments, and best practice in supporting children and young people.

What You’ll Need to be Successful in This Role:

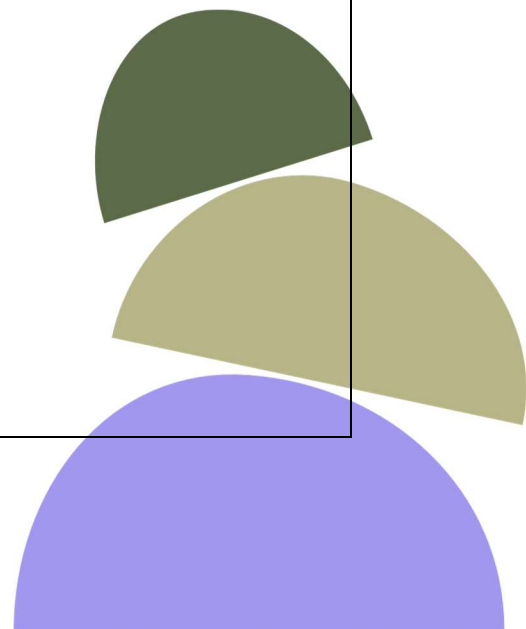
	Essential:	Desirable:
Qualifications	<p>Safelives CIDVA qualification or working towards</p> <p>A relevant qualification in working with children and young people (CYP), or currently working towards one.</p> <p>Although there are no formal qualifications required for this role, a good level of written and</p>	<p>Women’s Aid or Respect accredited training e.g. DAPA and Paladin Independent Stalking Advocacy Caseworker (ISAC)</p> <p>Level 4 diploma in Domestic Abuse</p> <p>DASH (Domestic Abuse, Stalking and Honour-Based Violence) risk assessment training</p>

	Essential:	Desirable:
	<p>spoken English is essential for this role</p>	<p>Training in trauma-informed care or domestic abuse awareness Knowledge of self-harm and suicidal ideation in children and young people, including risk factors, intervention strategies, and referral pathways.</p> <p>Understanding of trauma-informed approaches to working with children and young people experiencing mental health crises.</p>
Experience	<p>Proven experience of providing direct emotional and practical support to children and young people affected by domestic abuse, trauma, or other forms of adversity.</p> <p>Experience of working in multi-agency and partnership settings, including collaboration with social care, education, health, and criminal justice partners.</p> <p>Experience of managing a caseload and delivering high-quality, consistent support to children and families.</p> <p>Experience of completing risk assessments, including the SafeLives DASH RIC, and contributing to the MARAC process.</p>	<p>Experience of working with children and young people with complex needs and additional vulnerabilities.</p> <p>Experience supporting children and young people experiencing self-harm or suicidal ideation, including working within safeguarding and mental health frameworks.</p>



	Essential:	Desirable:
	<p>Experience of safety planning with children and young people using a trauma-informed and person-centred approach.</p> <p>Experience of supporting children and young people to explore and understand the impact of domestic abuse, including through 1:1 and group-based interventions.</p> <p>Experience of supporting families through the criminal justice system, including understanding of processes such as Claire’s Law and Family Court.</p> <p>Experience of promoting healthy relationships and attachment between children and their non-abusive parent/carer.</p> <p>Experience of working with children and young people from diverse backgrounds, including those from ethnic minority communities, and understanding issues such as Honour-Based Violence, Female Genital Mutilation, and the experiences of migrant children.</p>	

	Essential:	Desirable:
Skills & Knowledge for This Role	<p>Demonstrable understanding of intersectionality and its relevance to domestic abuse</p> <p>Knowledge of relevant legislation, policies, and guidance, including the Children Acts 1989 & 2004, the Domestic Abuse Act 2021, and <i>Working Together to Safeguard Children</i>.</p> <p>Understanding of the statutory and non-statutory services available to children and young people, and how the CHIDVA role fits within wider safeguarding and support frameworks.</p> <p>Knowledge of safeguarding procedures and the ability to identify, assess, and respond to risk appropriately.</p> <p>Skilled in using trauma-informed approaches to support recovery, build resilience, and empower children and young people to regain control of their lives.</p> <p>Ability to communicate effectively with children, families, and professionals, adapting communication styles to suit different ages, needs, and contexts.</p>	



	Essential:	Desirable:
	<p>Ability to maintain accurate, confidential records and contribute to monitoring and reporting requirements.</p> <p>Commitment to upholding professional standards and remaining compliant with all organisational, local, and national procedures, policies, and codes of conduct.</p> <p>Awareness of cultural sensitivities and a commitment to anti-discriminatory, inclusive practice.</p> <p>Commitment to anti-racist practice and inclusive service delivery.</p>	
Essential Core Skills	<p>Health & Safety Awareness All of our employees are required to work in a safe way, wear appropriate personal protective equipment (PPE), and keep themselves, other colleagues and customers safe. You will be expected to update your knowledge and skills on Health & Safety if successful in your application.</p> <p>Safeguarding We work with adults and children who may be 'at risk' and expect colleagues to work in a way which protects the people we support from harm. Our colleagues are expected to identify people 'at risk' and confidently report any Safeguarding concerns as appropriate within the service.</p> <p>Digital Across our services, we use a range of technology and systems and expect colleagues to use them effectively and safely following cybersecurity and data protection principles (UK GDPR). Full training on specific systems</p>	

	Essential:	Desirable:
	is provided but a willingness to learn and develop is essential.	
	<p>Equality, Diversity, and Inclusion (EDI) The Calico Group welcomes diversity and champions the rights of those in society who may be marginalised. Our employees are expected to be inclusive, embracing those from different backgrounds to develop a fairer society.</p>	

To succeed in any role within the Calico Group, candidates must show that their values and behaviours align with the organisation's principles. This alignment will be evaluated throughout the recruitment process.

The organisation is dedicated to safeguarding and promoting the well-being of adults, children, and young people. All employees and volunteers are expected to uphold this commitment and follow proper procedures to address any safeguarding concerns.

