

WHAT'S THE ROLE?

DEVELOPER

Working with IT partners, I'm responsible for the development and management of our data import processes by onboarding new data feeds through the bespoke ETL tool called Message Broker. Primarily focused on developing Microsoft SQL scripts/Stored Procedures translating business logic into data transformation. I act as a key conduit between the internal/external teams – ensuring new functionality is rolled out effectively to become business as usual. I find the best ways of importing and validating customer data, so we can build long-term relationships with our customers and keep them coming back for more. I get involved at the briefing stage and see it through to delivery of data, championing security, governance, quality and accuracy at every step along the way.

AS PART OF YOUR ROLE YOU'LL...

- Support the Data Import team who manage daily imports through Message Broker making sure all data feeds are run within their individual SLA's, ensuring data integrity and reconciliation.
- Manage the onboarding of new data feeds through the Message Broker.
- Collaborate with the team to ensure the quality of the data, ensuring data is cleansed, up to date and fit for purpose, and that minimum data requirements are met.
- Database Design and Development:
 - Design, develop, and maintain database schemas, tables, views, indexes, and stored procedures using Microsoft SQL Server.
 - Develop and optimize complex T-SQL queries to meet business requirements primarily transforming data received into the format required for our CRM (Customer Relationship Management) system.
 - Write and deploy SQL patches and queries.
- Performance Tuning and Optimization:
 - Ensure all database programs meet business and performance requirements.
 - Analyse and improve the performance of existing SQL queries and database systems.
 - Monitor database performance and identify bottlenecks.
- Database Maintenance and Administration:
 - Perform regular database maintenance tasks such as backups, restores and integrity checks.
 - Ensure the security, availability, and integrity of database.
- Provide support cover on our PHP platform.
- Provide support cover on our RPA (Robotic Process Automation) environment provided by Toca.io.
- Supported by a Trainee Apprentice Developer, assist in mentoring and coaching them.
- Create and maintain comprehensive database documentation and data dictionaries.

- Create and update data team user documentation and training guides as applicable, ensuring they are UpToDate, accurate and digestible.
- Maintain high quality data, making sure information is gathered and recorded in line with the requirements of the General Data Protection Regulation, ICO and Prostate Cancer UK Data Protection Policy.

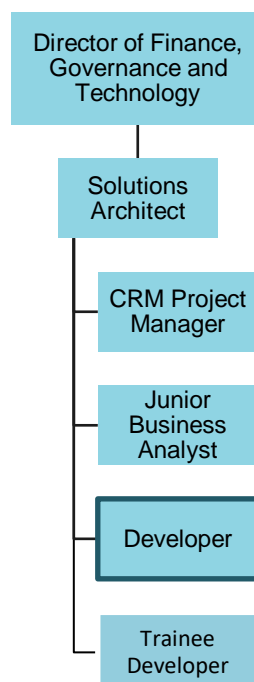
WHO YOU ARE

- Good working knowledge of SQL and data transformation.
- Experience in manipulating and validating data with strong attention to detail and accuracy.
- Experience in configuration of bulk importing tools such as Import-o-matic.
- Experience of running complex queries and selections.
- Able to map and optimise a process from start to finish collaborating with colleagues.
- Strong analytical skills.
- Excellent Excel and Access knowledge.
- Ability to work flexibly and responsively at speed where required and responding to urgent requirements.
- Excellent problem solving skills.
- Good communicator – comfortable in ability to communicate complex technical information to non-technical audience.
- Able to build relationships with colleagues at all levels across the organisation.
- Good organisational and time management skills.
- Actively supports our commitment to equity, diversity, inclusion and allyship.

YOUR ROLE: THE NUTS AND BOLTS

- Your line manager:** Data Delivery Manager
- Pay Band:** Band 3 – Technical Specialist
- Contract:** Permanent
- Hours:** Full time; 37.5 hours per week - We're happy to consider requests for flexible and part-time working on hiring.
- Location:** Hybrid working – a combination of remote and in-person working at our London Bridge office. You'd need to be in the office three days per week and we may need you to come in for specific meetings.

WHERE DOES MY ROLE FIT IN THE ORGANISATION?



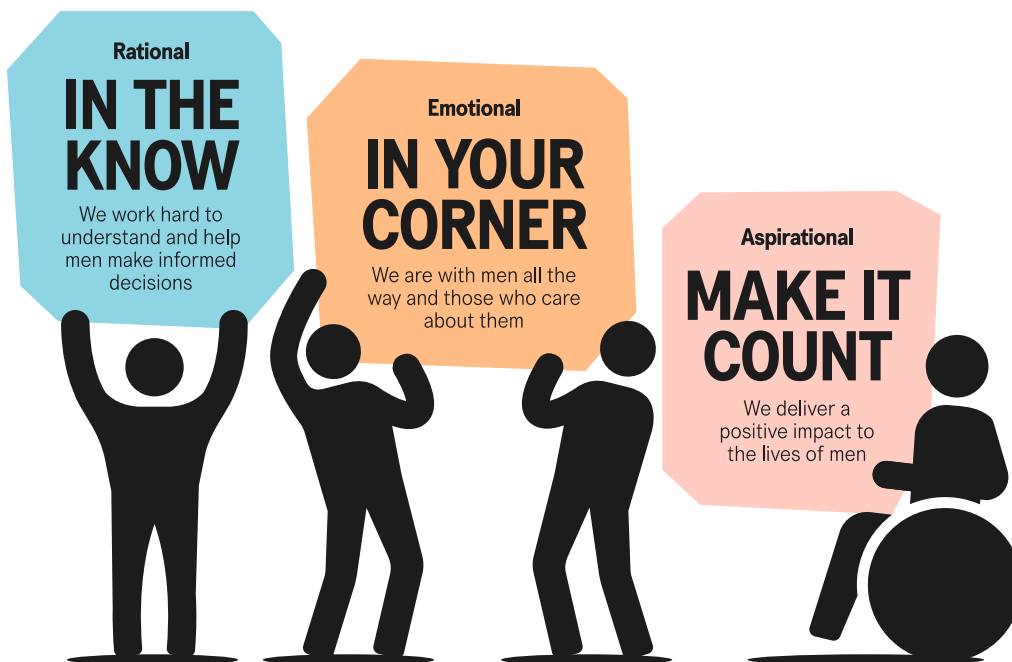
*Please note this role is seconded from the Communications Team where it reports into the Data Import Manager.

OUR CULTURE

VALUES AND BEHAVIOURS

Our values and behaviours help us make decisions, work together and guide the sorts of conversations we have on a day-to-day basis. They underpin our brand identity and give us a shared understanding of who we are and how we work together to create positive change, every day.

OUR VALUES



OUR BEHAVIOURS

RATIONAL	EMOTIONAL	ASPIRATIONAL
GENEROUS WITH KNOWLEDGE Switched on and well-connected, we share our expertise and make informed decisions.	GOT YOUR BACK Unembarrassed and reassuring, we listen, understand and stand up for those in need.	DO WHAT MATTERS Impossible to ignore, we focus on what matters to drive results and maximise our impact.
NATURALLY CURIOUS Constantly learning and hungry for knowledge, we challenge and push for answers.	OPEN TO ALL Inclusive and open-minded, we recognise everyone is unique and embrace different perspectives.	NEVER SETTLE Fired up and determined to make a difference in everything we do – and driven to give our best.

HOW TO APPLY

To complete your application, you will be asked to upload your CV and complete the supporting information section through our application portal. Please fill in parts one and two of our application for your personal statement, both have an 8000-character limit. You may wish to use a method such as the '[STAR](#)' technique or similar. When completing the statements please ensure you clearly provide a full and relevant example of how the criteria apply.

PART ONE

Please address the core/essential skills, experience and competencies required using real examples where possible and tell us in what ways you are a good match for the role.

This provides you with a great opportunity to showcase your knowledge, skills and experiences with the most important aspects of this role which will be used in reviewing and shortlisting applications:

- Good working knowledge of Microsoft SQL and data transformation
- Experience in manipulating and validating data with strong attention to detail and accuracy.
- Experience of running complex queries and selections.
- Able to map and optimise a process from start to finish collaborating with colleagues.
- Good communicator – comfortable in ability to communicate complex technical information to non-technical audience.

PART TWO:

Please provide us with any further supporting information that you feel will benefit your application. You may want to reference the values and behaviours sections.

This provides you with a great opportunity to further support your application, showcase your understanding of the role and how you feel you will be able to contribute to the success of Prostate Cancer UK.

Apply via our [jobs page](#). If you require any adjustments or assistance, please email hr@prostatecanceruk.org

We look forward to receiving your application!