



Beacon

For Adults.

For Businesses.

For Children.

Recruitment Pack

Adult Complex Case Counsellor

Registered Charity 1109545



Welcome. Here's a Little Bit About Us.

Beacon Counselling is a registered mental health charity in Stockport dedicated to improving mental health and emotional resilience of our community for more than 40 years.

We deliver a whole range of mental health and wellbeing services in schools, community hubs, online and from our base in the heart of Stockport, offered by our dedicated team of qualified paid and volunteer counsellors and wellbeing workers.

We know that everyone and every situation is different and that's why we provide people with a space to talk, and to be heard.

We know that good mental health can be life changing. We work with people to find the best way forward to live life with resilience and to face life's challenges with confidence.



Our values shape everything we do.

The extensive range of skills and experience offered by our team, mean we empower people to have good mental health and emotional resilience.

We support more than 3,000 adults, young people and children every year to improve their mental health and wellbeing through counselling, therapy, wellbeing services, group support and targeted projects.

We are an organisational member of the BACP (British Association for Counselling and Psychotherapy) and we adhere to their ethical and clinical guidelines, which means people can trust us to do the best we can for them, in a safe and confidential environment.

Inclusive

We are accessible to everyone and treat everyone as an individual

Collaborative

We work in partnership and value everybody's input.

Friendly

We're warm, welcoming and approachable

Respectful

We're all different and we respect that; we listen and never judge.

Courageous

We push ourselves and each other to go the extra mile

Effective

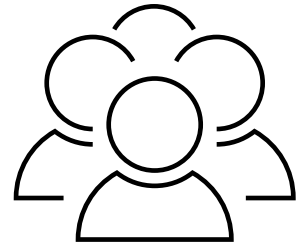
We're committed to making a positive difference to people's lives.

Extra things we offer.

Beacon is a charity empowering people to have good mental health and improving the lives of others. To enable us to do such brilliant work, we provide a supportive and welcoming environment for our teams.

Alongside the ability to expand your skills and development through the delivery of a diverse caseload, you will have access to:

- CPD opportunities and training
- Group supervision
- Staff counselling scheme
- Weekly clinical drop in opportunities
- 31 days annual leave including bank holidays, rising to 35 after 4 years
- Pension with 3% employer contribution scheme
- Charity Discount Worker Scheme
- Cycle to work scheme
- We are a real living wage employer



Who we are looking for.

We are looking for an experienced, skilled and friendly adult counsellor, dedicated to improving the mental health and emotional resilience of our community.

Our ideal candidate is committed to providing a high standard in their work, with a passion to supporting clients to help them on their journey towards positive mental health and who embed and share Beacon's values.

You will be delivering 1:1 complex case counselling and assessments within face to face and remote appointments for our Stockport Homes Group counselling service based onsite at Beacon House or at Stockport Homes Group main office.

Beacon Counselling and Stockport Homes Group work in partnership to provide effective, high quality short-term therapy to Stockport Homes adult tenants through a self or supported referral pathway.

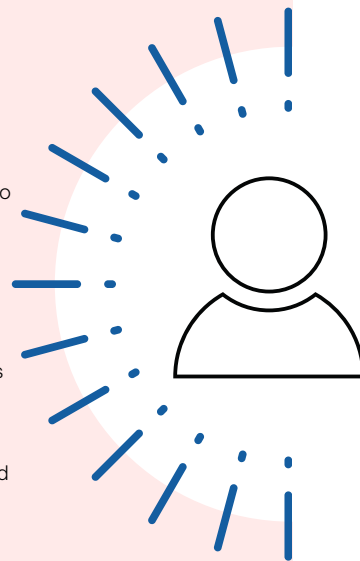
Clients referring into this service will be assessed initially by this role and allocated into the appropriate pathway within the programme.

You may be required to work evenings to meet the demand and needs of our clients. The role requires 10 client hours per week including assessments, with a 12 hour per week contract.

Our ideal applicant will be enthusiastic, caring, positive and committed to learning and developing within their role to ensure we continue to provide the best service to our clients. Although training to use our systems will be provided, you will have some digital competence and understanding to fulfil the administrative requirements of the role.

We are committed to building an inclusive and diverse team at Beacon and would particularly welcome applications from under represented communities including, LGBTQIA+, older applicants and global majority communities.

The salary for this role is £31,785 per annum pro rata.



**You
should
apply if
you...**

...have the following

- Qualified with a minimum of a Level 4/Diploma in Counselling/Psychotherapy.
- Demonstrable expertise and knowledge in delivering 1:1 counselling appointments.
- You will have a minimum of 500 post qualification hours to apply for this role with a minimum of 2 years post qualification experience.
- Experience of dealing effectively with safeguarding incidents.
- Experience and knowledge of working with people at risk of suicide and an awareness of specific issues affecting people at risk of suicide.
- Have an understanding of the impact of trauma in a therapeutic setting.
- Specialist knowledge of a range of counselling skills and approaches underpinned by theory.
- An awareness of boundary issues applicable to this high risk group.
- Experience of carrying out assessments.
- Ability to complete a range of monitoring tools effectively for clients and the service.
- Confidence in completion of administrative tasks and use of IT, including monitoring forms.
- An organised approach to your work including the maintenance of client records, ensuring information is secure and confidential.
- Would ensure to follow Beacons policies and procedures including safeguarding.
- Are friendly and approachable with positive and professional communication skills, working across all teams.
- Ability to work to a high professional standard and within the BACP's Ethical Framework.
- Are enthusiastic and committed to continual professional development, including mandatory training.
- Are registered with an appropriate regulatory body (e.g. BACP, NCPS).

**It'd be nice,
(but not essential)
if you can
also offer
any of
these.**

- You are BACP/UKCP accredited
- Have experience in delivering psycho-educational group work.
- Are creative and can use these skills to support clients.
- Are trained to deliver EMDR.
- Are trained to deliver single session therapy.
- Have experience working within partnerships.
- Have previous experience working within the charity sector.

Join Our Team.

**For further information contact
admin@beacon-counselling.org.uk or
call our main office on 0161 440 0055**

Thank you for your interest in joining Beacon.

If you would like to apply, we will need some info about you, so please send both your CV and a supporting letter to our Adult Service Assistant:

rachel@beacon-counselling.org.uk

The closing date for applications is 5pm Friday 11th April 2025, however, we are interviewing as and when suitable candidates apply and we reserve the right to close the advert early should we successfully recruit.

Just to note, we will not be able to accept applications after this date, however,

We look forward to receiving your application.

