

Refuge



**For women and children.
Against domestic violence.**



**Building Compliance Advisor
Applicant Information Pack**

Introduction from the CEO

Thank you for your interest in working for Refuge.

We have a diverse team of incredible people who work together to provide an inclusive approach to ensure that every woman who needs support when facing domestic abuse, receives it.

We do this through a combination of frontline services offering immediate safety and support to women and their children. We also lead vital work to influence and change policies and practices that impact women and girls and use public engagement and campaigning to help change societal attitudes and norms.

We know that domestic abuse will never end until it is recognised by society as the crime that it is, and there is an understanding that it is underpinned by misogyny. We will not stop until we are able to challenge and shift harmful societal attitudes as well as drive policy and practice change that is needed to end Violence Against Women and Girls (VAWG). It is only then that women and children will be free to live their lives in safety, with control over their choices and without fear.

Whatever your role at Refuge, you will have the opportunity to grow and develop as part of an amazing diverse and inclusive team of inspirational and talented people who provide vital and specialist services to women and children when their lives are in crisis. This is not always easy work, but it is essential, it is lifesaving, and it is life changing. So, whether you work directly with clients, behind the scenes, or represent Refuge to the outside world, you will be an integral part of what we do.

We look forward to receiving your application.

Abigail Ampofo
Interim CEO





We want kind and empathic people to work at Refuge, who believe in equality, diversity, and inclusion, are experts in their area of knowledge, want to make a positive difference and improve the lives of the women and children we support.

This is an opportunity to join Refuge as a Building Compliance Advisor. You will be responsible for ensuring that Refuge complies with statutory building and property obligations and monitor changes in industry standards and regulators requirements.

This post is restricted to women due to the nature of the role. The Occupational Requirement under Schedule 9 (part 1) of the Equality Act 2010 applies.

Salary

£37,635 per annum.

(Inclusive of London Weighting, which may not be applicable depending on your home location and any agreed permanent homeworking arrangement)

Employment term:

This post is Permanent, Full Time 37.5 hours per week

Location:

London with Hybrid working

Closing Date

09.00 am on 21 October 2024

Interview Date

1 November 2024

Employment Terms

Salary

The annual full-time salary for this role is £37,635. Please note that this includes a London Weighting allowance of £3,000 (pro rata for part-time employees), which may not be applicable depending on your location and homeworking arrangements.

Refuge is an accredited Living Wage Employer. This means that every member of staff working here will earn a real Living Wage. The real Living Wage is higher than the government's minimum, or National Living Wage, and is an independently calculated hourly rate of pay that is based on the actual cost of living. We voluntarily choose to pay the real Living Wage because we believe that a hard day's work deserves a fair day's pay.

Days and hours of work

The contracted hours of work are 37.5 hours per week, from Monday to Friday. This is exclusive of an unpaid lunch for every full day worked.

Probation

All appointments are subject to satisfactory pre-employment checks, further details will be provided when an offer of employment is made. The probation period for this post is 6 months.

Annual Leave

Annual leave allowance is 28 days per annum plus public holidays, rising to 30 days following completion of five years' service at the start of the annual leave year. Annual leave for part-time roles is pro rata.

Pension

Refuge operates a qualifying salary sacrifice pension scheme with Aegon.

Employee Benefits

Refuge offers a variety of exciting opportunities to learn, develop and grow in your career. We recognise the value everyone brings to the organisation in achieving our aims, and we are dedicated to developing and rewarding our staff.

We offer all our employees a competitive benefits package including:

- Competitive salary
- Clinical supervision for all staff
- Confidential support and advice service via an employee assistance programme available 24 hours a day which provides support on a range of work and personal issues
- Enhanced sick pay leave which increases with length of service
- Excellent sector leading maternity, adoption, parental and paternity pay and leave
- Generous life cover scheme valued at four times individuals' salary and covers death in service subject to insurers approval
- Eye care e-Voucher scheme
- Cycle to Work scheme
- Discounted membership with PureGym
- Access to Perkbox providing discounts to employees on a wide range of activities and online purchases
- Opportunity to join our wide range of Equality Network Groups
- Access to free Will writing service

- The ability to apply for flexible working from day one. There will be space to discuss flexible working at interview
- Interest free loans to purchase season tickets for travel to work and/or to pay deposits to secure rented accommodation, and for professional qualifications

Training and Learning

We are committed to supporting a culture that enables all staff to achieve their full potential by providing a range of professional and personal development opportunities including access to a wide range of e-learning resources.

JOB DESCRIPTION

Job Title	Building Compliance Advisor
Directorate	Corporate Services
Reports to	Head of Property
Location	Hybrid/London
Responsible for	N/A
Working hours	37.5 hours per week or full time.
Working pattern	9.00am – 5.30pm Monday – Friday
Contract	Permanent, Full time

Role outline

The post holder will ensure Refuge complies with statutory building and property obligations by monitoring changes in industry standards and regulators requirements and complete returns. They will also monitor obligations in property agreements and support corporate services and provide technical advice which may require research. The post holder will collect property data to demonstrate compliance and for reporting purposes as well as update Refuge's property policies accordingly and train people.

Key Accountabilities

- Ensure sites are safe, secure and compliant to evidence this in reports and returns.
- In-house technical advisory.
- To ensure Refuge knows of its statutory and regulatory building and property obligations.
- To keep up to date with the baseline of building and property knowledge and information.
- To translate statutory and regulatory requirements into Refuge policy.
- To communicate both external and internal building and property requirements corporately.
- To be the in-house technical advisor and as required to research and gather information.

Building safety and property compliance

- To be the corporate lead on building safety, FRA and property compliance.
- To monitor our corporate position and to update the senior team and board.
- To update policies to align with changing requirements and the marketplace.
- To lead a routine program of sharing policy training colleagues.
- To assist services in the development of local arrangements for compliance.
- To provide technical support on property-related problems.
- To capture building safety data and certifications to monitor and report on compliance.
- For quality assurance to monitor compliance data and certifications.
- To undertake site inspections and to write follow up reports and action plans.

Property Management

- To maintain the property database.
- To store all property agreements in one place and create a log of key dates in agreements.
- To proactively plan to act in line with requirements in agreements.

Supply chain management

- To lead in or support services to procure consultants or contractors.
- To help develop or lead in the development of client briefs and specifications.
- To agree costs and program, also other contract terms.
- To monitor performance and to keep in touch with suppliers.
- As required to support services with project delivery.

Customer services

- To provide a corporate property support service to non-property colleagues.
- To provide quality customer service and to communicate effectively.

Self-management

- To manage time effectively, including lone working, personal security and work travel.

Teamwork

- Provide appropriate 'team' cover in the absence of other staff as reasonably requested.
- To be available out of hours to manage/deal with emergencies.

Reporting & returns

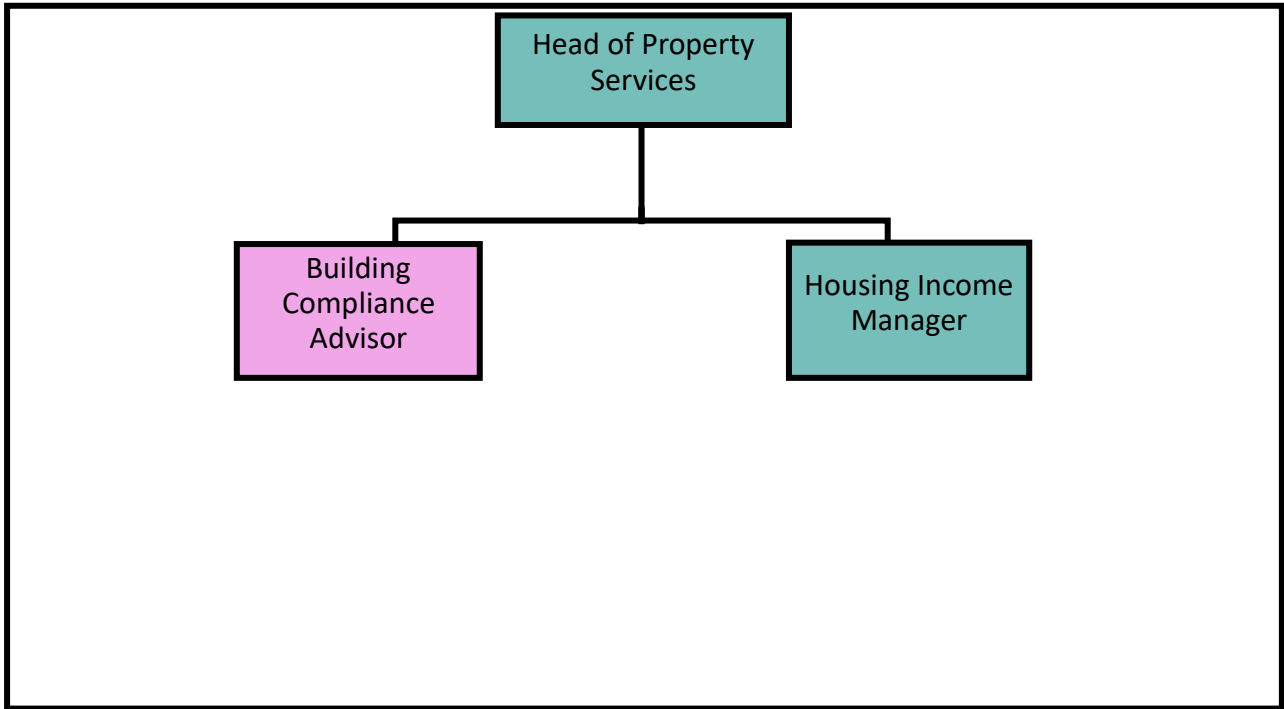
- To input on or write internal reports and to complete the annual NROSH return for our regulator.
- To be the point of contact with our insurers and to provide them with information.

This post is restricted to women due to the nature of the role. The Occupational Requirement under Schedule 9 (part 1) of the Equality Act 2010 applies.

We are committed to safeguarding therefore we expect all staff and volunteers to share this commitment. As part of this commitment, we undertake basic disclosure checks (DBS) in accordance with the DBS Code of Practice for all roles. We undertake an enhanced DBS check for our roles working directly with survivors.

It is essential to the development of Refuge's service delivery that the post holder can respond flexibly to changes in the requirements of this post. This job description is therefore a guide and not an exhaustive list of all responsibilities the postholder may have over time.

Team Structure Chart



Who Are We Looking For?

For us it is important that you are passionate, committed and care about the work Refuge undertakes. Not all roles require previous experience in the Violence Against Women and Girls (VAWG) sector. You may be able to bring relevant experience from another industry or transferable skills from a different type of role or volunteering/community experience.

For us, a role description is a useful guide. But please don't discount yourself if you feel you don't meet all the criteria and believe you have the potential. Above all we value individuals who are committed to working hard but looking after yourself, flourish in an inclusive environment and want to make a positive difference to the communities we support.



Person Specification

Experience, Knowledge and Qualification

- A Property Qualification /IOSH or NBOSH or working towards
- A Property Professional Qualification or working towards
- Driver's license and a car (or able to travel to remote locations)
- Experience in working in property, housing, or facilities management
- Knowledge of or experience in building and property legislation and policy development.
- Experience as an in house building or property technical analyst or advisor
- Knowledge of or experience of landlord health and safety/property compliance
- Experienced in reading property agreements and understands implications
- Experienced in procurement of suppliers, both consultants and contractors
- Experience in data collection and reporting
- Experience in site inspections, writing reports and action plans
- Experience of developing and maintaining effective working relationships
- Experience of using word, excel, PowerPoint, Microsoft tools including teams
- Experience of writing reports and reporting to internal forums and senior officers
- Experience in good communication and can-do presentations.

Skills

- Excellent numeracy and literacy skills for the job, also IT skills
- Skilled in data gathering and inputting, record keeping and data management
- Can analyse information and data logically and present it to audiences
- Understanding of project management skills, with ability to monitor progress
- Can manage a busy and varied workload and priorities to meet deadlines
- Can work well with people as a team player
- Can work on own initiative and has a can-do attitude

Personal Qualities

- Shares and is committed to the Charity's values and a desire for helping others
- Shows originality and is passionate about the job and its purpose
- Ability to be flexible in approach to changes in the working environment
- Demonstrates resilience and seeks solutions in pressured and stressful situations
- Is flexible and willing to work outside usual working hours sometimes

An Inclusive Workplace for All

- Our vision is to have a workforce that is reflective of the communities we serve; therefore, we actively encourage and welcome applications from candidates of diverse cultures, perspectives and lived experiences.
- We are committed to challenging the inequalities of society and will continue to learn and grow as an organization to ensure that we provide an inclusive and welcoming environment for all.
- We understand that people have personal lives, and these can sometimes impact on their time and availability. We will be as flexible as we possibly can be in terms of supporting staff to balance their work and their personal lives. If you need flexibility within your working hours, working pattern or location then do let us know and if the role and team can support that request, we will do what we can to support you.
- We are proud to have been awarded Disability Confident Employer. Refuge is aware that individuals with disabilities, or long-term health conditions or are D/deaf or neurodivergent are underrepresented in the sector. Refuge is committed to doing what we can to support our employees.
- We committed to paying a competitive salary for the sector because we want to help break the poverty cycle and reduce social economic barriers to those working within the sector. This is reflected in our commitment to the Show the Salary pledge and #Nongraduateswelcome and being an Accredited Living Wage employer.
- We understand that individuals who are Black, Asian and ethnically diverse are often underrepresented within the sector therefore we have signed up to the VAWG Anti-Racism charter, we have an EDI Steering Group and equality, diversity and inclusion training.
- We have created a [Respect Charter](#) to complement our values to support our EEDI journey in creating an inclusive and respectful environment both within Refuge and beyond.
- Furthermore, we have seven Employee Network Groups providing a safe space for staff to share their lived experiences and to challenge us as an organization to do better.

These groups are:

- Mental Health and Wellbeing
- LGBTQI+ Shine
- Anti-Racism
- Allies
- Families
- Women's
- Disability and Neurodiversity Matters

How To Apply

Key Information and Deadlines

To apply please access our online application form via our website:

<https://refugecareers.ciphr-irecruit.com/Applicants/vacancy>

Applications must be completed and submitted by 09.00am on 21 October 2024

- If you have any questions or want to discuss the post before applying, please contact us via email to recruitment@refuge.org.uk
- You can also find out more information about Refuge at www.refuge.org.uk

Interviews will take place via video conference on 1 November 2024.

Completing your application form

What matters most to us when recruiting new members to join the Refuge team, is the inclusive attitude and relevant experience you will bring to the organisation and the role, and how you will support our values of: *A FEMINIST FORCE FOR GOOD, NEVER SHY AWAY, BUILD IT TOGETHER, SHOW WE CARE, LEARN EVERY DAY*. The full values can be downloaded from our [website](#)

Please note that we do not accept CVs for this job vacancy and all applications must be submitted via our online application form. The application process will require you to complete various sections of the application form. It is important that you complete all sections. Please do indicate N/A (not applicable) should some areas of the form not apply to you.

Your Supporting Statement section of the application form describing your skills and experience against the job description and person specification, will also be used to determine who to invite for an interview. Therefore, please do give clear examples of how your skills and experience are relevant to the job you are applying for, and how and where you have used them. Your Supporting Statement should not exceed a maximum of 800 words.

For example, this can be:

- Relevant experience from your present or previous jobs.
- Skills and experience gained from community or voluntary work, work experience, leisure interests and activities in the home.
- Education and the training you have received.

We would like to thank you in advance for expressing an interest in working for Refuge. We look forward to receiving your application.

Applications from Refuge Service Users and Survivors

Former Refuge service users and other survivors supporting Refuge in its external work including for fundraising, policy, media and press can apply for all externally advertised job vacancies.

Survivors that are currently using our services cannot apply for Refuge job vacancies. This restriction is for the survivor's safety and to ensure there is no conflict of interest.

A confirmation of a conditional job offer to a former service user will be subject to a risk assessment. Where significant risks to Refuge and other service users cannot be mitigated, we may not be able to make a conditional offer of employment. If successful in securing the role, their data on Impact will be protected.

Our commitment to inclusive recruitment

Our People and Culture team will remove your name, address and date of birth before forwarding your information for shortlisting. Your education is only considered if it is a requirement of the role.

We want Refuge to be an organisation that is reflective of the society we are based in, therefore, we are committed to growing our diverse workforce. The information you provide on the diversity monitoring form is confidential and helps the People and Culture team to understand where you would have seen the role and how we may need to do better in ensuring everyone who wants to work for Refuge is aware of the opportunities as they arise.

Other information

Safeguarding is vital to our work, and we strive to prevent harm and promote and protect the welfare and safety of all adults and children that come in contact with the organisation. We have a collective responsibility to take a do no harm approach by prioritising the safety and wellbeing of the women and children accessing our services, as well as ensuring a duty of care to our staff and volunteers.

As part of this responsibility, we undertake basic disclosure checks (DBS) for all roles in accordance with the Codes of Practice and in line with our Recruitment of Ex-Offender and Disclosure Barring Services Checks Policy, and for our roles working directly with survivors, at an enhanced level check. Applicants are encouraged to apply for job vacancies, having a spent or unspent conviction will not automatically exclude you from being offered the role. If you are successful in securing the role, we will hold an open and measured discussion about any convictions that might be relevant to the role. Our Recruitment of Ex-Offender and Disclosure Barring Services Checks Policy is available to applicants on request.

Data Protection Act

Refuge is committed to protecting your privacy. Information provided by you in your application form will be kept for the purposes of monitoring. It will be copied for use during the recruitment process. Once the recruitment process is completed, the data will be stored for a maximum of 6 months and then destroyed. If you are the successful candidate, relevant information will be taken from this form and used as part of your human resources record. All personal information that you supply to us as part of your application will be processed in accordance with prevailing UK Data Protection legislation.

By submitting your completed application form you are consenting to your personal data being used and held as described above.

Please ensure that the information you give to us is correct and that you let us know of any changes immediately.

