



# Staff recruitment pack

2023



**Bowel Cancer UK**  
Beating bowel cancer together



“ On many occasions when we were in some difficult and very dark places, we received invaluable help and support from Bowel Cancer UK. Their professional knowledge, advice and emotional guidance were absolutely priceless and that is why I’m delighted to be a volunteer, working to create a future where nobody dies of the disease. ”

Tim

## Welcome from our Chief Executive, Genevieve Edwards

I’m delighted you’re interested in joining our team at Bowel Cancer UK.

Our task is urgent. Every 30 minutes someone dies from bowel cancer, making it the UK’s second biggest cancer killer. But it shouldn’t be this way, because bowel cancer is a treatable and curable disease, especially if diagnosed early.

Bowel cancer is also the fourth most common cancer in the UK – nearly 43,000 people are diagnosed each year. It can affect anyone, but it’s most common in those over 50. The scale of our task cannot be underestimated.

Bowel Cancer UK is the UK’s leading bowel cancer charity. We’re determined to save lives, improve the quality of life for everyone diagnosed with the disease, and support all those affected by bowel cancer in the UK. Our vision is a future where nobody dies of the disease.

Thanks to the generosity of our community, we’re in a privileged position to be able to grow our staff team to deliver our ambitious new strategy, which we will be launching in the spring.

There are huge challenges facing bowel cancer patients across the UK, and our community needs us now more than ever. We’re building a team of enthusiastic, dedicated people who



Genevieve Edwards, Chief Executive

can help us achieve our goal - a world where nobody dies of bowel cancer.

You’ll join an organisation with a vibrant, dynamic and ‘can-do’ culture. You’ll help the charity operate to the highest standards, raise more money, invest in research and support services, influence national policy and make a meaningful and impactful contribution to the lives of those affected by bowel cancer.

**If this sounds like the challenge for you, we’d love to hear from you. Thank you for your interest.**

## Why work with us?

At Bowel Cancer UK our work is productive and rewarding. We strive to meet the standards of a good employer within the charity sector and to do what we can to achieve balance in our working lives. We're committed to quality and the attainment of professional standards of excellence in every area of our work.

You can expect a well-structured and focused working environment with clarity about performance expectations and work standards. We want everyone to know how they can contribute to achieving our goals and feel part of a supportive team with high ambitions. You'll have regular meetings with your line manager, an annual appraisal, and a personal development plan.

### Flexible working

You'll have the flexibility you need to achieve a good work-life balance. You can work at home, in our Hub in London, or a mixture of both and can also request flexible working hours. Everyone is provided with a laptop to ensure they can fully access our IT systems from home, or on the go.

### Financial benefits

We operate a Group Personal Pension Scheme through Scottish Widows and provide a contribution of 5% of salary while you contribute 4%. After three months' service, you'll benefit from a life assurance scheme offering four times your salary in case of death in service. You'll also have access to an annual season ticket loan or, if you prefer to travel on two wheels, a cycle to work loan scheme.

### Leave entitlements

You'll have 27 days annual leave (pro rata) plus eight bank holidays. We also close for three days over Christmas and these days are given in addition to the leave entitlement. Paid emergency leave, study leave and bereavement leave are available to all our people. Sometimes you may need to carry out extra work outside normal working hours – for example to cover evening meetings or a weekend event. In these situations, we offer time off in lieu (TOIL) to compensate for the extra time worked.

### Wellbeing benefits

Our Employee Assistance Programme means you and your immediate family will have access to an independent confidential 24 hour helpline and counselling service to support you with health, work, home or legal issues you may face. If you're a display screen user, we'll pay for an annual eye test and if you need glasses or contact lenses to help you with your role, we'll fund the cost of standard frames and lenses.

We're looking to increase the diversity within our team and welcome applications from anyone who has the skills and qualities outlined in the job description or who believes they have the ability to learn them fast. What's important isn't your level of education

or the opportunities which you've had, it's about you and how you seize the prospects ahead of you.

### About Bowel Cancer UK

We're the UK's leading bowel cancer charity. We support and fund targeted research, provide expert information and support to patients and their families, educate the public and professionals about the disease, and campaign for early diagnosis and access to best treatment and care.

### Our vision

A world where nobody dies of bowel cancer.

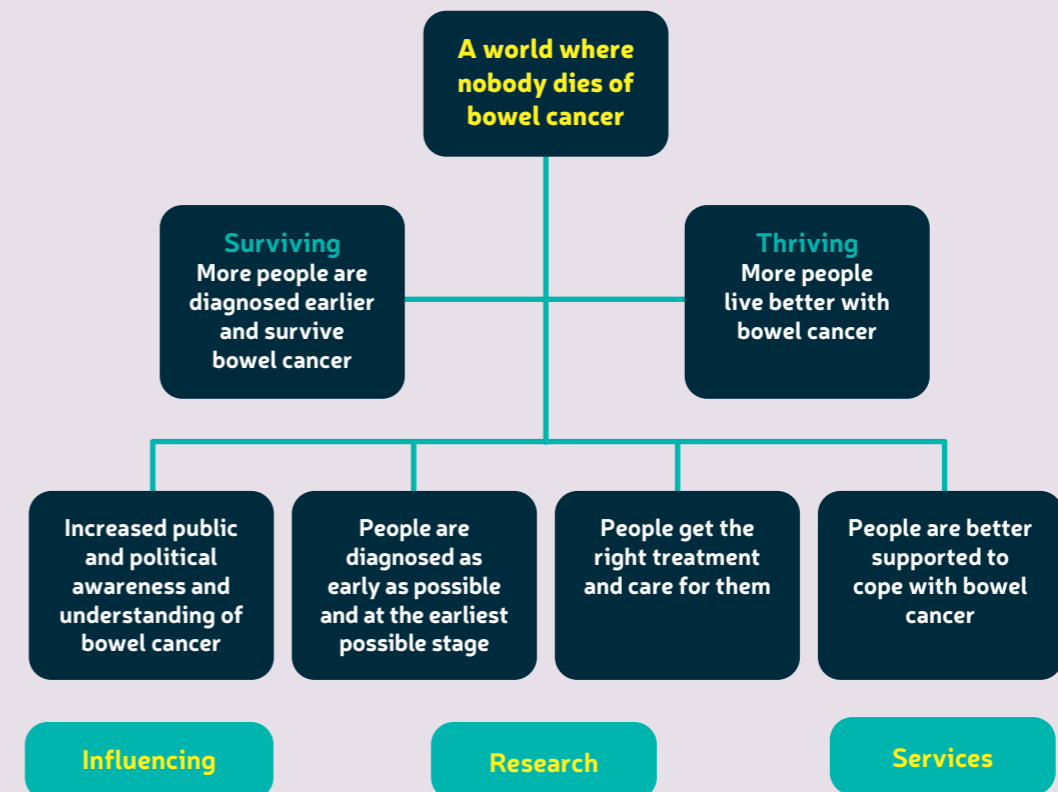
### Our mission

We're determined to save lives and improve the quality of life of everyone affected by bowel cancer by championing early diagnosis and access to best treatment and care.

### Our values

We always strive to be patient and family focussed, compassionate and human, expert and evidence-based, ambitious and determined, and welcoming and inclusive.

### Our strategic goals



## 2021 in numbers



Over **10,500** individuals and **175** partners and institutions helped us to raise **£5.3 million**



We provided over **1.7 million** moments of support to people affected by bowel cancer, and their loved ones



Almost **1,600** pieces of media coverage reached millions of people



We sent out nearly **90,000** health information booklets to patients and healthcare professionals



Our digital patient information was downloaded nearly **25,000 times**



Our funded researchers levied an additional **£8 million investment** into bowel cancer research



Our forum grew to more than **6,100** active members and was visited over **half a million times** over the course of the year - an **86% increase** in the number of visitors compared to 2020



We helped secure approval for **three new drugs** to benefit advanced bowel cancer patients in the UK



We worked in partnership with over **60** charities during the year to champion the needs of bowel cancer patients in the face of COVID-19



More than **600** 'Walk Together' events took place across the UK, raising over **£151,000**



We were instrumental in lowering the bowel screening age to 56 in England and 58 in Wales – **a step in the right direction towards screening at 50 for all**

## Financial summary 2021

### Where our money comes from

- Individuals **£1,321,456**
- Legacies **£272,623**
- Nations **£349,551**
- Partnerships & Philanthropy **£811,615**
- Runs **£534,503**
- Treks & Challenges **£746,620**
- Community **£842,370**
- Pro Bono **£417,128**
- Other **£12,058**



### How we spend our money

- Generating Voluntary Income **£1,158,949**
- Awareness and Direct Services **£693,203**
- Communications, Campaigns and Research **£1,153,361**
- Support costs **£530,438**



“

When I was really scared, I went onto Bowel Cancer UK's online forum and then joined the stage 4 Facebook group. This has been a massive support for me and I'm active on it. I also used the charity's website to find out information about my cancer.

Hannah

”



**Bowel Cancer**<sup>UK</sup>  
Beating bowel cancer together

Bowel Cancer UK is the UK's leading bowel cancer charity. We're determined to save lives and improve the quality of life of everyone affected by the disease.

We support and fund targeted research, provide expert information and support to patients and their families, educate the public and professionals about bowel cancer and campaign for early diagnosis and access to best treatment and care.

**To donate or find out more visit**  
**[bowelcanceruk.org.uk](http://bowelcanceruk.org.uk)**

 [/bowelcanceruk](https://www.facebook.com/bowelcanceruk)

 [@bowelcanceruk](https://twitter.com/bowelcanceruk)