



# Recruitment pack

2024





**“ A year after my bowel cancer diagnosis, I shared my story with Bowel Cancer UK. Since then, I’ve had some fantastic opportunities to raise awareness of the disease and talk about my journey in the press, and on the charity’s website and social media channels. I’ve been really grateful for these opportunities and hope that they will help give hope to others in a similar situation to myself. ”**

**Mohammad**

## Welcome from our Chief Executive, Genevieve Edwards

**I’m delighted you’re interested in joining our team at Bowel Cancer UK.**

Our task is urgent. Every 30 minutes someone dies from bowel cancer, making it the UK’s second biggest cancer killer. But it shouldn’t be this way, because bowel cancer is a treatable and curable disease, especially if diagnosed early.

Bowel cancer is also the fourth most common cancer in the UK – nearly 43,000 people are diagnosed each year. It can affect anyone, but it’s most common in those over 50. The scale of our task cannot be underestimated.

Bowel Cancer UK is the UK’s leading bowel cancer charity. We’re determined to save lives, improve the quality of life for everyone diagnosed with the disease, and support all those affected by bowel cancer in the UK. Our vision is a future where nobody dies of the disease.

Thanks to the generosity of our community, we’re in a privileged position to be able to grow our staff team to deliver our ambitious new strategy, which we launched in 2023.

There are huge challenges facing bowel cancer patients across the UK, and our community needs us now more than ever. We’re building a team of enthusiastic, dedicated people who can help us achieve our goal - a future where nobody dies of bowel cancer.



**Genevieve Edwards, Chief Executive**

You’ll join an organisation with a vibrant, dynamic and ‘can-do’ culture. You’ll help the charity operate to the highest standards, raise more money, invest in research and support services, influence national policy and make a meaningful and impactful contribution to the lives of those affected by bowel cancer.

**If this sounds like the challenge for you, we’d love to hear from you.**

**If you’d like an informal discussion about working with us, please contact [jobs@bowelcanceruk.org.uk](mailto:jobs@bowelcanceruk.org.uk)**

**Thank you for your interest.**

## Why work with us?

At Bowel Cancer UK our work is productive and rewarding. We strive to meet the standards of a good employer within the charity sector and to do what we can to achieve balance in our working lives. We're committed to quality and the attainment of professional standards of excellence in every area of our work.

You can expect a well-structured and focused working environment with clarity about performance expectations and work standards in line with our competency framework. We want everyone to know how they can contribute to achieving our goals and feel part of a supportive team with high ambitions. You'll have regular meetings with your line manager, an annual appraisal, and a personal development plan.

### Flexible working

You'll have the flexibility you need to achieve a good work-life balance. You can work at home, in our Hub in London, or a mixture of both and can also request flexible working hours. Everyone is provided with a laptop to ensure they can fully access our IT systems from home, or on the go.

### Financial benefits

We operate a Group Personal Pension Scheme through Scottish Widows and provide a contribution of 5% of salary while you contribute 4%. After three months' service, you'll benefit from a life assurance scheme offering four times your salary in case of death in service. You'll also have access to an annual season ticket loan or, if you prefer to travel on two wheels, a cycle to work loan scheme.

### Leave entitlements

You'll have 27 days annual leave (pro rata) plus eight bank holidays. We also close for three days over Christmas and these days are given in addition to the leave entitlement. A range of paid family leave, study leave and compassionate leave are available to all our people. Sometimes you may need to carry out extra work outside normal working hours – for example to cover evening meetings or a weekend event. In these situations, we offer time off in lieu (TOIL) to compensate for the extra time worked.

### Wellbeing benefits

We offer a wide range of holistic strategies to support our employees, including an Employee Assistance Programme for you and your immediate family to have access to an independent confidential 24 hour helpline and counselling service to support you with health, work, home or legal issues you may face. We recognise the importance of wellbeing in the workplace and offer our staff a weekly wellbeing hour to support this. We also have trained Mental Health First Aiders who are available to provide further support and signposting as required. If you're a display screen user, we'll pay for an annual eye test and if you need glasses or contact lenses to help you with your role, we'll fund the cost of standard frames and lenses.

We're looking to increase the diversity within our team and welcome applications from anyone who has the skills and qualities outlined in the job description or who believes they have the ability to learn them fast. What's important isn't your level of education or the opportunities which you've had, it's about you and how you seize the prospects ahead of you.

### About Bowel Cancer UK

We're the UK's leading bowel cancer charity. We support and fund targeted research, provide expert information and support to patients and their families, educate the public and professionals about the disease, and campaign for early diagnosis and access to best treatment and care.

### Our vision

A future where nobody dies of bowel cancer.

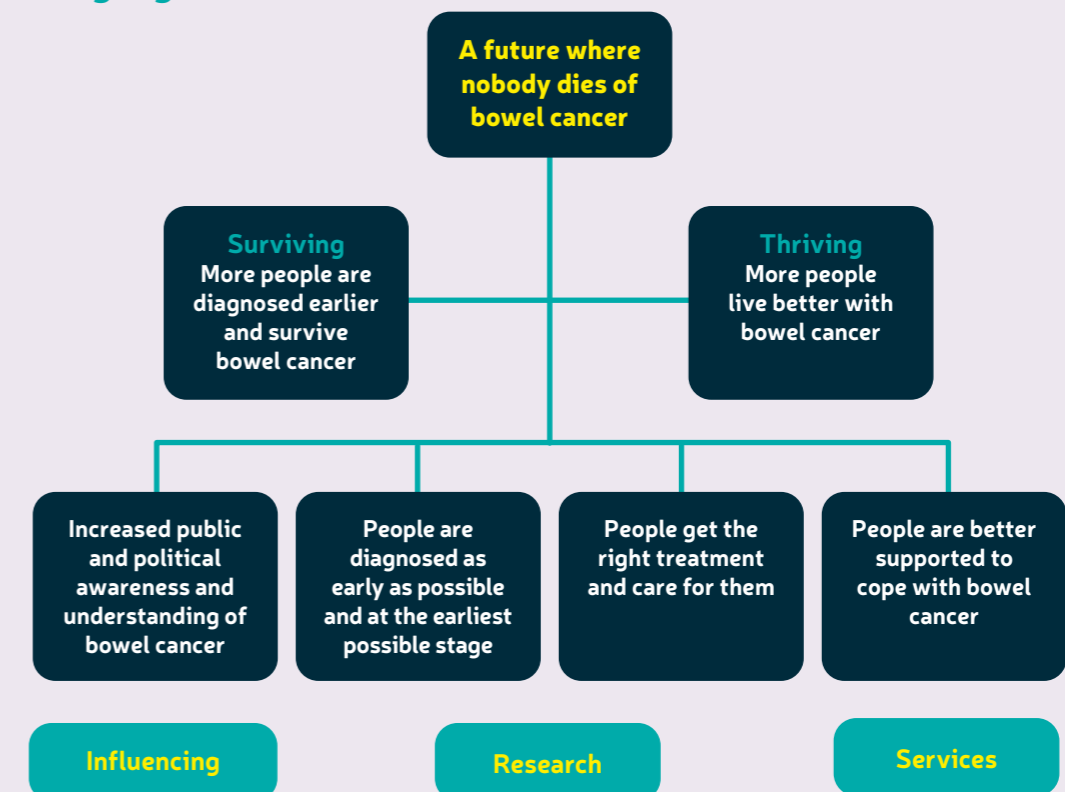
### Our mission

We're determined to save lives and improve the quality of life of everyone affected by bowel cancer by championing early diagnosis and access to best treatment and care.

### Our values

We always strive to be patient and family focussed, compassionate and human, expert and evidence-based, ambitious and determined, and welcoming and inclusive.

### Our strategic goals



## 2022 in numbers



We provided over **1.8 million** moments of support to people affected by bowel cancer and their loved ones



We funded new research grants totalling **£464,300**, including four projects looking at a range of ideas to improve early diagnosis and the appointment of our first Colorectal Surgical Research Chair in Scotland



Our digital patient information was downloaded over **38,000 times**



We sent out nearly **119,000** health information booklets to patients and healthcare professionals



Over **12,000** individuals and nearly **200** partners and institutions helped us to raise **£6.3 million**



Our Ask The Nurse service responded to **563 enquiries**



Our healthcare professionals network **almost doubled** and we ran five virtual education events attended by more than **330 professionals**



Our forum grew to more than **7,000 active members** and was visited over **half a million times** over the course of the year



Our **#GetOnARoll** campaign inspired every major supermarket to raise awareness of bowel cancer symptoms. We secured eight partners by the end of the year - including toilet roll brand **Andrex®** - bringing lifesaving information into more than one in three households in the UK



We shared the **voice of 100 patients** and their families to help secure NICE approval for regorafenib, a new treatment for advanced bowel cancer patients



More than **100 pharmacies** in Wales requested our brand-new pharmacy toolkit to encourage people experiencing symptoms to seek help faster

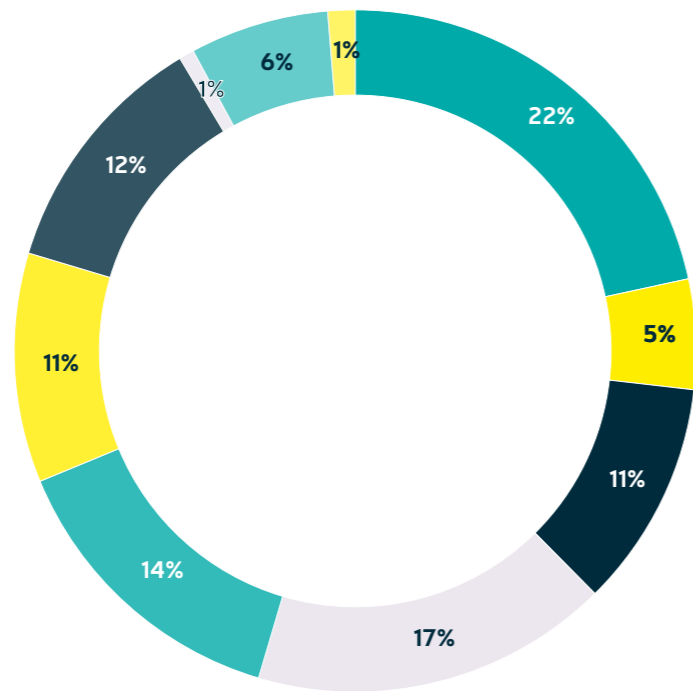


Thanks to almost **650 campaigners** writing to their local politicians, **88 local politicians attended** our events in Holyrood, the Senedd and Westminster during Bowel Cancer Awareness Month

## Financial summary 2022

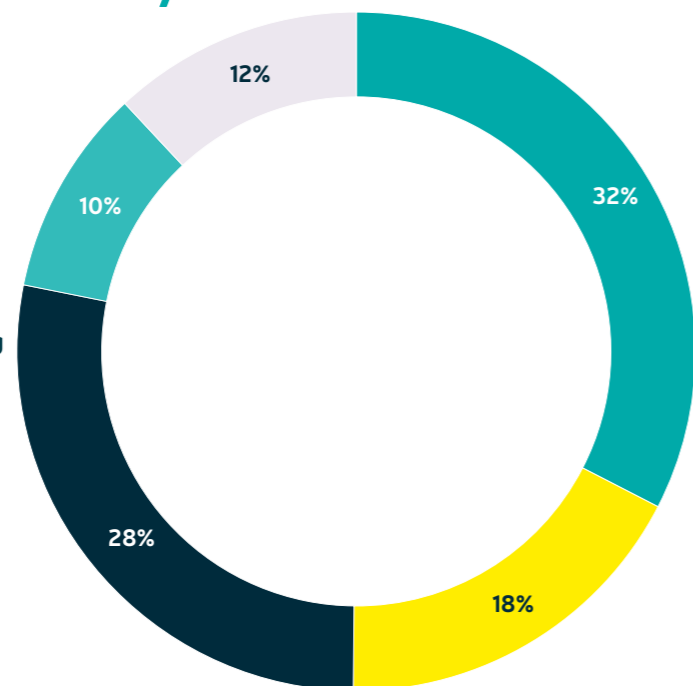
### Where our money comes from

- Individuals £1,352,119
- Legacies £326,448
- Nations £674,593
- Philanthropy & Partnerships £1,062,652
- Runs £887,802
- Treks & Challenges £680,677
- Community £736,933
- Trading £44,365
- Pro Bono £412,624
- Other £12,058



### How we spend our money

- Generating Voluntary Income £1,555,543
- Direct Services £839,618
- Awareness, Policy & Influencing £1,337,609
- Research £473,093
- Support costs £570,835



“ I fundraised for Bowel Cancer UK in memory of my sister Sharan, who passed away from bowel cancer, in order to keep her memory alive and to raise awareness of the disease. I chose to support this charity so that they can continue the incredible work they do, as I don't want anyone to have to experience what my sister or my family have been through. ”

Manisha, pictured with her sister Sharan



**Bowel Cancer**<sup>UK</sup>  
Beating bowel cancer together

Bowel Cancer UK is the UK's leading bowel cancer charity. We're determined to save lives and improve the quality of life of everyone affected by the disease.

We support and fund targeted research, provide expert information and support to patients and their families, educate the public and professionals about bowel cancer and campaign for early diagnosis and access to best treatment and care.

**To donate or find out more visit**  
**[bowelcanceruk.org.uk](https://www.bowelcanceruk.org.uk)**

 /bowelcanceruk

  @bowelcanceruk