



Application Pack

Community Engagement Navigator (Somali and other migrant communities)

£29,093 - £30,267 per annum

37.5 hours per week

Fixed term until May 2026



Welcome to WECIL

WECIL is an award winning, user-led organisation dedicated to supporting independent living to create a more inclusive society.

We provide a range of holistic services for anyone who identifies as a Disabled person including people with long-term health conditions. All of our services are designed for Disabled People, by Disabled People.



Joining our team means being part of a community that is passionate about making a positive impact and driving positive change. With opportunities for personal and professional development, a supportive work environment, and the chance to work alongside dedicated and inspiring colleagues, WECIL is not just a workplace – it's a brilliant place to grow, thrive, and make a difference. Come and be a part of our journey towards a more inclusive and accessible future.

[Read our Annual Report](#)

[Read our Strategy](#)

Benefits of working for WECIL:

We offer a range of benefits including flexible working options, generous annual and family leave, and opportunities to learn and develop your skills.

Annual Leave

Staff at WECIL get 30 days of annual leave! Plus 8 bank holidays - that's a total of 38 days!

Enhanced Pay and Support for New Parents

We offer up to 6 months enhanced maternity pay and 4 weeks for paternity/partners leave and are committed to providing a flexible and supportive environment for working parents.

Enhanced Pension Contributions

We will match your contributions into your pension scheme up to 6% of your earnings.

Wellbeing Support

We offer staff access to the Health Assured scheme which includes a helpline, health checks and counselling support.

Learning and Development

We will provide you with access to a variety of learning opportunities and professional training so that, whatever your chosen field of work, with the right mix of challenge and support, you'll gain fantastic experience and room to develop and advance your career.

We are proud to be a Disability Confident Leader



Role details:

Everyone wants to make a difference, right? But how many of us can actually say that our work has a positive impact on the lives of other people, day in, day out? This is an exciting opportunity to work with WECIL's biggest team and make a difference to disabled adults and families from Somali and other migrant communities.

We are looking for a self-motivated and passionate individual, someone with strong personal values and a desire to make a difference to people's lives. Experience working in Social Care is an advantage, but not essential. The role offers incredible job satisfaction, flexible working, excellent holiday entitlement and opportunities to develop as part of a systems thinking team.

This role is open to anyone however, if you have lived experience of disability then we are particularly interested to hear from you. It is essential for the role that you are able to speak either Somali or Arabic and are also fluent in English.

Salary: £29,093 - £30,267 per annum

Reports to: Navigator Team Leader

Hours: 37.5 per week. We will accept applications for part-time working, or job share arrangements. If you are applying on this basis, please state so in your application.

Location: Home, office (Fishponds) and community based throughout Bristol

Fixed term until May 2026

[Job Description](#)

Apply now!

Click 'Apply now!' above, or visit our website:
<https://wecil.org.uk/contact/join-us/>

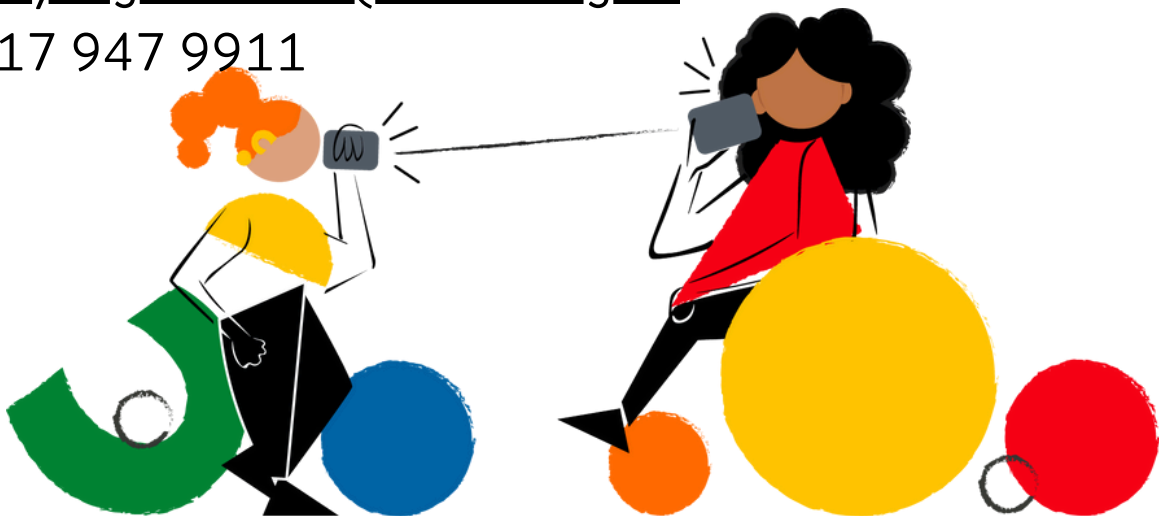
All applications will be subject to a shortlisting process to ensure candidates meet the minimum criteria for the role. As disability confident leaders all applicants who meet the essential criteria for this position will be guaranteed an interview.

Closing date - 27th September 2024

Expected interview date - week commencing 8th October 2024

If you have any further questions or would like a discussion about this role in more detail, please get in touch:

- Kristy-Leigh Thomas - Navigator Team Leader
- kristyleigh.thomas@wecil.org.uk
- 0117 947 9911



wecil.org.uk