

## Head of Development and Communications (fundraising, communications and influence)

### The details

<b>Role:</b>	Head of Development and Communications
<b>Place of work:</b>	Hybrid working with 1-2 days per week based in the office Office location - 27 Pear Tree Street, London, EC1V 3SB
<b>Hours of work:</b>	Full time - 37 Hours per week
<b>Salary</b>	£50,000
<b>Reports to:</b>	Director of LPT
<b>Level of screening:</b>	Enhanced DBS

### About Lighthouse

Lighthouse Pedagogy Trust is a charity creating life-changing, education-focused children's homes to ensure that children in care have the same opportunities as everyone else. We believe that children growing up in residential care should go on to achieve great things and lead fulfilling lives. We believe that social pedagogy, a focus on education, people and place is the best approach to supporting young people.

Our first children's home, opened in February 2022, is an award-winning building that has set a new standard for UK children's homes. You can learn more about the home and even take a virtual tour [on our website](#).

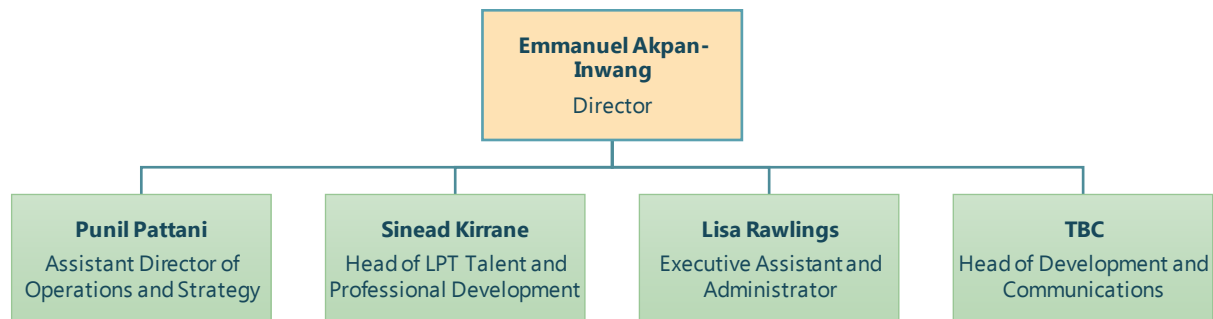
As we continue to grow, we're excited to welcome new team members who are passionate about our mission. We are on the cusp of opening our second home with a third to follow shortly. In September 2025 we will launch a Graduate Diploma with our university partner. Additionally, in 2026, we plan to collaborate with a range of organisations from across the sector to deliver a leadership programme for children's home managers. Joining our team at this pivotal stage in our development will provide you with an exciting opportunity to contribute significantly to our expansion.

The Lighthouse Pedagogy Trust team is driven by a shared commitment to creating empowering places where everyone has the opportunity to grow and learn. We follow our key values of Compassion, Play, Difference, Empowerment, Curiosity and Commitment.

Difference is one of our core values, and we strive to take the broadest possible view of diversity. We value people from all backgrounds – by this we mean ethnicity, gender, age, and any other visible or invisible quality that makes you unique. We welcome that every person brings their own perspective and experience to our children's homes, to contribute to our vision.

Lighthouse Pedagogy Trust is a charity that sits within the Catch22 group of organisations, running independently on a day-to-day basis.

## Team structure and roles



## Your role

You will be joining Lighthouse Pedagogy Trust at an exciting time and you will contribute to the growth of our organisation by crafting innovative fundraising strategies, writing compelling funding applications and strengthening and developing new relationships with grant funders to secure essential support for expanding our homes and services.

As the Head of Development and Communications, you'll face a range of challenges every day. You will also be responsible for our internal and external communications, as well as overseeing our impact reporting to ensure that we stay on track towards our mission.

Your work will be essential for driving sector change through advocacy. You will be responsible for maintaining relationships with a wide range of organisations from across the sector as well as developing new ones.

You will join a small, dynamic, driven team committed to making a difference. We have a fun and hard-working culture, and you will enjoy the benefits of being part of Catch22, a well-established charity, while still working in a small startup environment.

## About you

We are looking for someone with a proven track record of working with diverse stakeholders and a demonstrated ability to influence at senior levels. A great communicator, with high-impact presentation skills and an ability to present complex information in an accessible way to varied audiences.

Joining a small team means you will need to be able to balance strategic thinking with hands-on execution, happy to roll up your sleeves and spend as much time focused on delivery as you are on strategy and ideation. You will be passionate about improving the lives of children who grow up in care and committed to our organisation's growth, goals and values.

You will be a skilled problem solver and self-starter who can think quickly and lead projects independently. You will produce high-quality documents and be driven by ambitious outcomes. This role is suited for someone who enjoys managing multiple projects, which means you will need to be organised, proactive, and adaptable to changes.

Experience in a strategic or analytical role, like strategy consultancy or a leadership role in a charity, is desirable but not essential.

## Roles and responsibilities

### **Grant funding and social investment**

- Develop and implement a comprehensive fundraising strategy
- Sustain relationships with our funders, and maintain high levels of engagement from them to secure funding renewals to support the expansion of LPT's homes and services
- Write compelling funding applications
- Collaborate with colleagues to develop a pipeline of prospective funders and social investors aligned with LPT's mission and goals.
- Manage reporting cycles, and write timely and clear progress reports and updates for funders and stakeholders about LPT achievements, and other strategically relevant information

### **Communications**

- Develop and execute an external stakeholder engagement strategy,
- Lead the organisation's public relations and branding efforts, managing day-to-day communications such as social media, and press interactions
- Act as an ambassador for LPT, speaking at external events and representing the organisation at conferences, events, and sector forums
- Coordinate speaking engagements and media appearances for LPT's leadership team
- Write LPT's annual report and submission to the charities commission
- Write regular reports and updates for trustees and members of our project forum
- Write and send internal communications to ensure all staff are aware of important information and events

### **Influence and Impact**

- Develop and execute a comprehensive influence strategy to support our work to create positive and systemic change in the children's home sector
- Build relationships with government departments, ministers, civil servants, and local authorities to strengthen LPT's profile and influencing work
- Collaborate with think tanks, universities and research bodies and build relationships with them that will enhance our influence and advocacy work

- Seek opportunities and respond to requests for information about LPT's approach and share learnings with other organisations, contributing to sector-wide improvements
- Oversee our impact measurement and reporting work with support from external consultants
- Use impact data to inform and underpin our fundraising, communications, influencing and advocacy work

## **Sector Collaboration**

- Identify new opportunities to share our work and perspective with external organisations
- Coordinate with a range of children's home providers and other organisations to collaborate on cross-sector projects
- Speak to other children's home providers and gather information about good practice across the sector
- Coordinate with universities, training organisations and other partners to support colleagues with the development of advanced qualifications and leadership programmes for children's home staff to improve practice across the sector

The duties as outlined in this job description are not exhaustive and may change from time to time due to the changing nature of the working environment. You are expected to carry out all appropriate tasks necessary to meet the needs of the service, or as may be requested by your manager.

## **Safer Recruitment**

At Lighthouse Pedagogy Trust we are committed to safeguarding all children and young people in our care. As part of our recruitment process, we conduct rigorous checks and vetting of all applicants in line with legal and regulatory requirements, and best practice.

This post is subject to an enhanced Disclosure and Barring Service (police records) check, including overseas police checks where necessary. Please note that this post is exempt from the limitations of the Rehabilitation of Offenders Act, and as such all previous cautions and convictions will need to be disclosed as part of any application.

For further information about the process please go to: <https://www.gov.uk/db-check-applicant-criminal-record>

Person Specification			
COMPETENCY	ESSENTIAL	DESIRABLE	ASSESSMENT
<b>QUALIFICATIONS</b>	<ul style="list-style-type: none"> <li>Educated to degree level or with equivalent working experience</li> </ul>		Application
<b>KNOWLEDGE/ EXPERIENCE</b>	<ul style="list-style-type: none"> <li>Experience working with a diverse range of stakeholders, internal and external, across an organisation</li> <li>Experience working with Directors and senior management to deliver strategic objectives.</li> <li>Experience performing in a fast-paced environment</li> <li>Experience communicating in varied styles for varied audiences</li> </ul>	<ul style="list-style-type: none"> <li>Experience working with funders</li> <li>An existing strong network of potential partners and funders</li> <li>Experience working in an analytical role such as consultancy or a leadership role in a charity or social enterprise</li> <li>An understanding of the national policy environment related to children's social care</li> </ul>	Application/Interview
<b>SKILLS &amp; ABILITIES</b>	<ul style="list-style-type: none"> <li>A hands-on person with the ability to think strategically and act tactically.</li> <li>Exceptional stakeholder engagement skills, with a demonstrated ability to influence diverse and senior stakeholders.</li> <li>Ability to balance attention to detail with big-picture thinking.</li> <li>Proven ability to work under pressure, to tight deadlines, across multiple projects, and produce high-quality work</li> </ul>	<ul style="list-style-type: none"> <li>The ability to use data to inform strategic decision-making</li> </ul>	Application/Interview

	<ul style="list-style-type: none"> <li>• High-impact presentation skills and an ability to present complex information in an accessible way</li> <li>• Flexible and well-organised</li> <li>• A skilled problem solver and self-starter</li> </ul>		
<b>OTHER</b>		<ul style="list-style-type: none"> <li>• An interest in innovative approaches to children's residential care</li> </ul>	Application/interview