

# Welcome to Hackney Shed!



## WHO ARE WE?

Hackney Shed is an inclusive young people's performing arts company established in 2001 in partnership with the Chickenshed Theatre and is now an independently operating charity. We work with young people up to the age of 25 years old.

We believe that every member of the group has something special to offer to the development of the art, and the development of the group. Hackney Shed works hard to provide an exciting, vibrant, creative and accepting place for children and young people to come together, share ideas and produce exciting theatre.

We strive to make all our activities accessible to everyone, including members with Special Educational Needs and/or Disabilities (SEND), and we pride ourselves on our 'no barriers' policy.

## WHAT PEOPLE SAY ABOUT US



"It's an amazing way to learn about inclusivity and diversity and you model it so well at Hackney Shed."  
(Parent 2024)

"It's fun and I get to be creative, learn new things and meet new people." (Participant 2023)

"Social  
Active  
Fun  
Easy to express yourself" (Participant 2022)

"Hackney Shed is a marvellous, shining example of genuine, meaningful inclusion." (Parent 2022)

"Performing and Hackney Shed lets me express myself. The amazing staff team always listen and I feel safe and comfortable here." (Participant 2023)

"It would be great if more children and young people could access Hackney Shed. Confidence building and young people leading with ideas"  
(Audience member 2024)



## WHAT DO WE OFFER?



### **HACKNEY SHED CHILDREN THEATRE**

We deliver this workshop from 6:00 pm to 7:15 pm every Tuesday for children aged 7-11 from both mainstream and special needs schools. We teach theatre and performing skills, and work towards performances, leading up to a big end of term production that usually takes place in July.



### **HACKNEY SHED YOUTH THEATRE**

Our Youth theatre follows the same aims as our Children Theatre but it focuses on young people aged 11-16 and is delivered every Tuesday from 7:30 pm to 8:45 pm. Both groups culminate their year in a full performance which is shared with family members and the local community.



### **HACKNEY SHED YOUNG COMPANY**

We deliver a series of shorter projects for young people aged 16-19. We run weekly workshops for 5 weeks each term which focus on different outcomes. Projects in the past have covered devising, script work, improvisation, audition techniques and short films.



### **HACKNEY SHED COLLECTIVE**

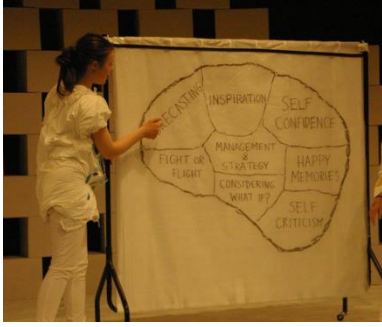
Collective is aimed at 16-25 year olds with a particular focus on those with learning disabilities and/or autism, however, anyone is welcome to attend. Each term we work in a slightly different way to maximise the number of participants who may be able to access the project. We deliver a number of workshops throughout the year and have been part of The National Theatre Connections programme since 2019.



### **HACKNEY SHED PLUS**

This includes everything else we do, including holiday workshops and masterclasses, school, drama clubs, bespoke projects and workshops and partnerships with other organisations. Some examples of our Hackney Shed Plus projects are our Filmmaking workshops, Circus skills, Stage Combat and participating in the Hackney Dementia Festival.

## How do we work?



Our core team is made up of our Artistic and Strategic Director, our Creative Participation Lead and our Strategic Programmes Manager who work across all our projects. Most of our staff are part time. In addition, we hire additional creative facilitators for each project. However, as most of our staff are part time, we rely very much on our wonderful volunteers to support the workshop sessions and input their creativity. We also take on additional artists in both paid and volunteer roles throughout the year for specific projects. This might include choreographers, designers or sound artists. Nearly all of Hackney Shed's paid staff first began by volunteering with the company.



We encourage our older young people to take on a mentoring or practitioner roles within some of the groups. The children you see on stage today will be running the Hackney Shed of tomorrow! Our young people often access more than one Hackney Shed project at a time. Volunteers are incredibly important in modelling the skills needed to provide support to others and are often instrumental in young people taking on volunteering roles themselves.

Most of our volunteers support with Children's and Youth theatre or Collective. This is partly because the groups are the most regular and partly because due to the young people's ages (CT/YT), diverse access needs (Collective) and the sizes of the group, this is often where support is most valuable. Below is a little more information about these groups.

### Children's Theatre and Youth theatre



These are the groups that Hackney Shed began with. We run weekly sessions across all three terms, normally focusing on skills in the autumn, devising in the spring and rehearsing a big show in the summer term

Both these groups are inclusive of young people with learning and physical disabilities, neuro-diversities (such as autism or ADHD), social, emotional and mental health needs and any other access requirement that means the young people may face barriers to joining other theatre companies. We are strictly no auditions, optional donations only and actively seek to involve young people who may not independently look to join a drama club.

To support our inclusive practice each year we aim to work towards at least one production which has been inspired by the devised work of the group. Our productions are always original pieces devised by the children and young people and scripted by the practitioners.

Examples of our past shows include:

**"Dream and Nightmares"**, our most recent production, performed in July 2024. In this original story, Uki wanted to make friends but wasn't sure how. When some magical cooks in the school canteen notice that he could use some help, they open a can of worms and showed Uki how great he can be. Every day Uki wakes up in a new body, a new time and a new place. In the second part of the show, created by Youth Theatre, a controversial dream controlling service promised to solve the mental health crisis.





In 2023 Children and Youth Theatre produced **“Noisy and Annoying”**, a show in two parts, inspired by the word IMPACT. The young people explored many uses of this word. From forest canopies to deep under the sea, the creatures of rebelled against human's rubbish! They knew the only way they could make a change is if they worked together. When the rights of some are removed to benefit others, then surely it's time to take a stand against those in power?

In 2022 we produced **“A Bed for the Knight”** and **“You’ve lost Me!”**. With Children’s Theatre we travelled all the way back to Medieval Hackney to see a village under threat from a bulldozer happy knight trying to find a comfortable place for his dragons to rest. Youth Theatre took us on an epic adventure at sea, showing us how young people handle a cruise once the adults are gone.



**All our productions are inspired by the ideas and interests of the young people we work with. As well as teaching theatre skills we workshop ideas and characters that eventually lead to performances. We write our scripts around the skills and strengths of our members and work to give everyone the chance to shine.**

#### Children’s Theatre and Youth Theatre Details

**Where: BSix Sixth form college theatre, Brooke House, Kenninghall Rd, Hackney, E5 8BP**

#### Directions:

Enter the college via the main front door. Stay on the ground floor, registration takes place in the canteen.

Nearest Mainline (from Liverpool Street): Clapton

Buses: 38,48, 55, 106, 253, 254, 393, 816, N38, N55, N106

Parking - There is some street parking on Kenninghall Road, the college has a car park that can be accessed via Brooke Road. It is gated and is accessed via an intercom to the main reception desk.

**When: Tuesday (CT and YT) evenings in school term times**

**Times:** Children’s Theatre (CT), 6.00pm-7.15pm (5:45 – 7:30 for staff and volunteers)

Youth Theatre (YT), 7.30pm-8.45pm (7:15 – 9:00pm for staff and volunteers)

**Expenses:** Volunteers are able to re-claim travel expenses and we also offer additional expenses for certain roles/events when funding is available

**DBS:** We accept DBS documents not older than 2 years old unless you are signed up to the update service. We will process a DBS for all committed new volunteers who require one.



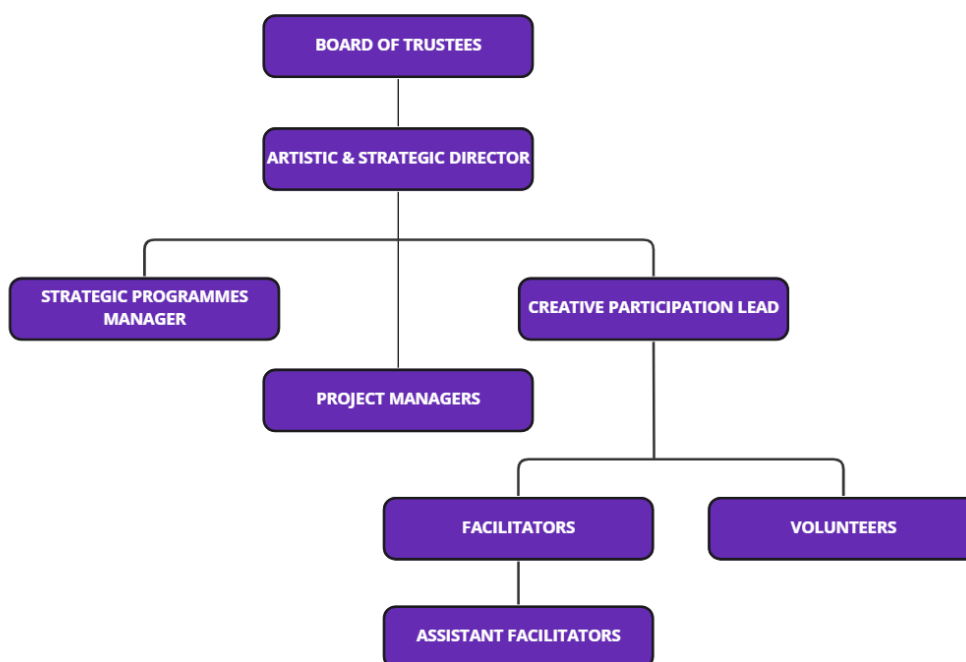
Collective began in 2016 as we were made aware by our members with learning disabilities that when they left us aged 16 there was nowhere else to go as they were too young for adult groups, and often when they could join, they then felt young and wanted a more youth focused company

Since then, Collective has grown massively. We are now an inclusive company, where (for most projects) the majority of the group will be young people with access needs but they are joined by young artistic enablers aged 14 plus from our youth theatre, young company and Hackney Shed plus. This means that young people in Collective are independent on stage and the company is truly theirs. Collective have performed at Hackney Carnival, The Old Church Stoke Newington, Sutton House, Theatre Royal Stratford East and Southwark Playhouse, the last two venues being through taking part in National Theatre Connections.



To increase access opportunities, Collective sessions follow a different pattern each term and we mix up doing weekend projects inspired by group theatre trips, weekly sessions where we work towards productions and holiday masterclasses.

## HACKNEY SHED ORGANISATIONAL STRUCTURE



## OUR TEAM

Vicki Hambley

Artistic and Strategic Director



As Artistic Director, Vicki is involved in all the different programmes that we run, either facilitating or as Project Manager. She is also responsible for fundraising, making sure our projects are sustained throughout the year.

Vicki is our **Designated Safeguarding Lead** and is designated to act as the person responsible for ensuring that appropriate action is taken in case of abuse. Vicki is one of our **First Aiders**.

You can get in touch with her at [vicki@hackneyshed.org.uk](mailto:vicki@hackneyshed.org.uk) or by phone at 07927 082 592.

Anna Clover

Creative Participation Lead (On Maternity Leave)

Anna runs our Children and Youth Theatre programmes and Hackney Shed Collective. She is also responsible for managing our volunteer programme for our various projects.

Anna is our **Deputy Safeguarding Lead**. On occasion where Vicki Hambley is not available any concerns or disclosures should be reported to Anna. Anna is one of our **First Aiders**.

You can get in touch with Anna at [anna@hackneyshed.org.uk](mailto:anna@hackneyshed.org.uk)



Claudia Rebolledo Sanchez

Strategic Programmes Manager

Claudia is outside BSix college theatre every Children and Youth Theatre session. She is responsible for registering the young people and is the first point of contact with parents and carers.

Claudia is our **Deputy Safeguarding Lead** while Anna is on Maternity Leave. On occasion where Vicki Hambley is not available any concerns or disclosures should be reported to Claudia.

Claudia is one of our **First Aiders and has the first Aid Kit with her during Children's and Youth Theatre sessions**.

You can get in touch with Claudia at [info@hackneyshed.org.uk](mailto:info@hackneyshed.org.uk) or by phone at 07950 838 238

Sarah Schofield

Trustee Lead for Safeguarding

Sarah joined Hackney Shed as a volunteer facilitator in 2003 and became Hackney Shed's administrator in 2007. She went on to work as part of the Hackney Shed staff until 2019.

Hackney Shed has been a huge part of Sarah's life over the years and she is passionate about the work delivered. She joined Hackney Shed's Board of Trustees at the end of 2019.

Sarah is our **Trustee Lead for Safeguarding**. If for any reasons Vicki, Claudia or Anna are not available or you feel you can't share your concerns with them, any concerns or disclosures should be reported to Sarah.

You can get in touch with Sarah at [trustees@hackneyshed.org.uk](mailto:trustees@hackneyshed.org.uk)



*You can find information about the rest of our Board members on our website or by asking the team.*



## SAFEGUARDING

Hackney Shed believes that every child should have access to a safe, creative, inclusive environment. Where members are children, it is necessary to ensure that their welfare, care and protection are actively planned for.

**Everyone working or volunteering with Hackney Shed will need to undertake a DBS check if they are working directly with the children and young people.**

Please make sure you tell Claudia if you need a DBS processed. Her email is [info@hackneyshed.org.uk](mailto:info@hackneyshed.org.uk)

If you already have a DBS, please bring us the original to see or if you are registered online, give us your certificate number, your Date of Birth and your surname as it is on your certificate.

We are happy for volunteers to start working with us prior to reference/DBS checks as all our sessions are supervised by staff and in groups, however if any safeguarding issues arise through the reference checking/DBS process we discuss these with applicants and may have to terminate volunteer relationships if necessary.

We require all staff and volunteers to undergo a safeguarding briefing with us and read our safeguarding policy.

We also suggest you do the NSPCC online introduction to safeguarding (if you haven't already done this). This is not mandatory, but we highly recommend it, especially if you have never done any safeguarding before. The training is quite short and can be done in sections. There is a charge, but we will reimburse you if you decide to do this. You can find the training here [NSPCC child safeguarding](#)

## DATA PROTECTION

We need to hold some of your personal details while you are working/volunteering with us and for some time afterwards. Please refer to our Data Protection Policy and Privacy Notice for more information about this and please fill in the following form to give us permission to do so.

In this form we request your permission to store your details and video photography permissions. We also request that you share your emergency contacts so that if something were to happen to you during a session, we would know who to contact.

[Staff and Volunteer Data, Emergency Contact and Safeguarding form](#)

## The role of volunteers



All practitioners who join Hackney Shed are invited to take part in the planning, devising and delivery of workshops and performances at their own pace. We have paid/long term practitioners who take final responsibility for making sure sessions run, but we encourage all to share their skills and gain experience in delivering workshops. However, there is no pressure and if you just want to come along and join in then that's fine too! We aim to work as a team and learn from each other. We hope to be able to offer committed practitioners paid positions in the future (pending funding). We offer training sessions (usually at the beginning of each term) where we go

over safeguarding, share experience of inclusive work and discuss any issues that may arise.

All staff have a responsibility to safeguard and promote the welfare of children and adults. The post holder will undertake the appropriate level of training and is responsible for ensuring that they understand and work within the safeguarding policies of the organisation.



### **Availability**



We ask that all practitioners who join Hackney Shed are committed to at least the term they have signed up for. We appreciate that missing some sessions is sometimes unavoidable but request that you contact us as soon as you know if you are going to be absent. We ask that you re-assess your availability at the end of each term and where possible use these natural breaks to make decisions about your commitment.

We ask that you contact us or inform us in advance if you are unable to attend any sessions as this may affect the planning and delivery.

### **Other volunteering opportunities**

We do have other volunteering opportunities but as our HS+ and HSYC projects are slightly different and we are likely to recruit volunteers from those who have built up some experience working with us already.

However, if there is a particular group or idea you have around volunteering, do please let us know so we can discuss it further.

**Thanks so much for your interest in Hackney Shed. We couldn't do any of it without you!**

[www.hackneyshed.org.uk](http://www.hackneyshed.org.uk)

'Like' us on [Facebook](#) @Hackneyshed

Follow us on [Twitter](#) @HackneyShed

Follow us on Instagram [@Hackney\\_Shed](#)